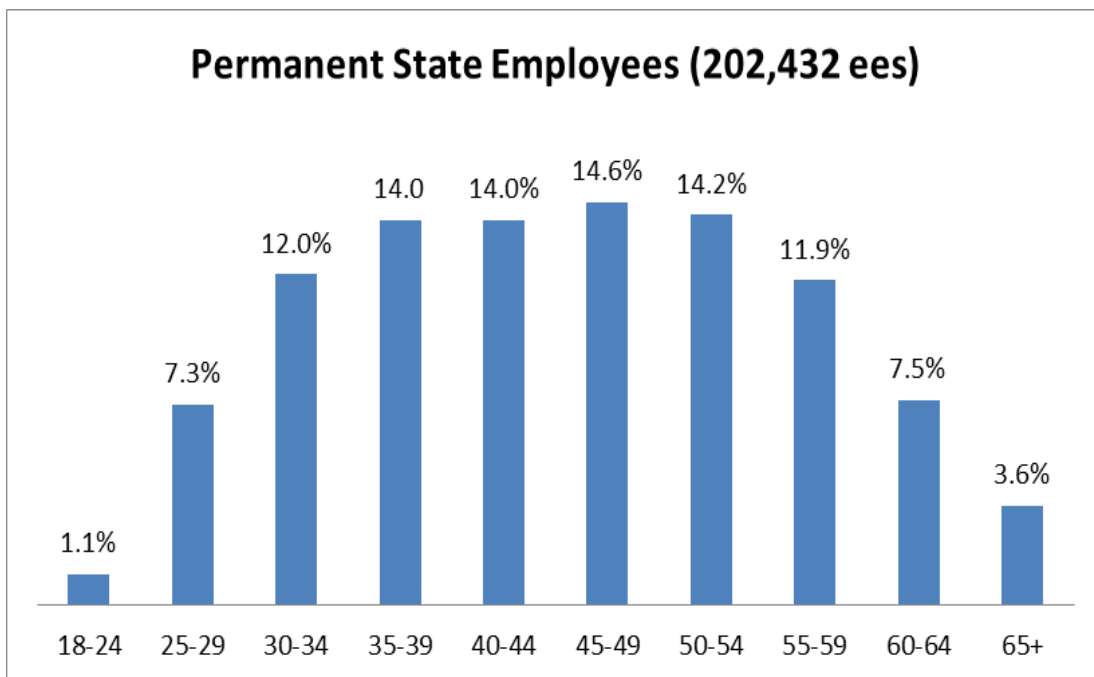


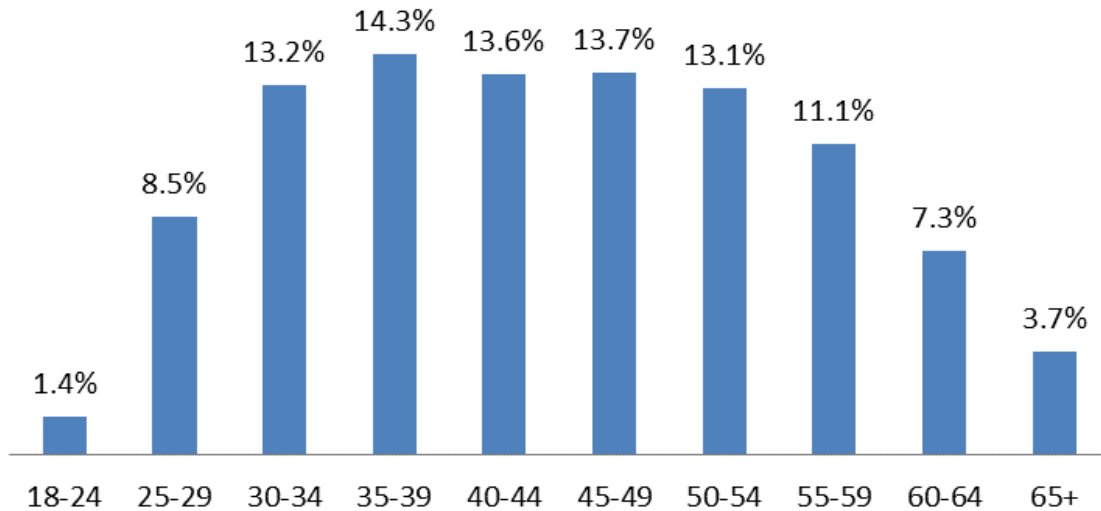
## California State Employee Age Demographics December 2020

The following age demographics reflect workforce data from December 2020 for civil service employees.



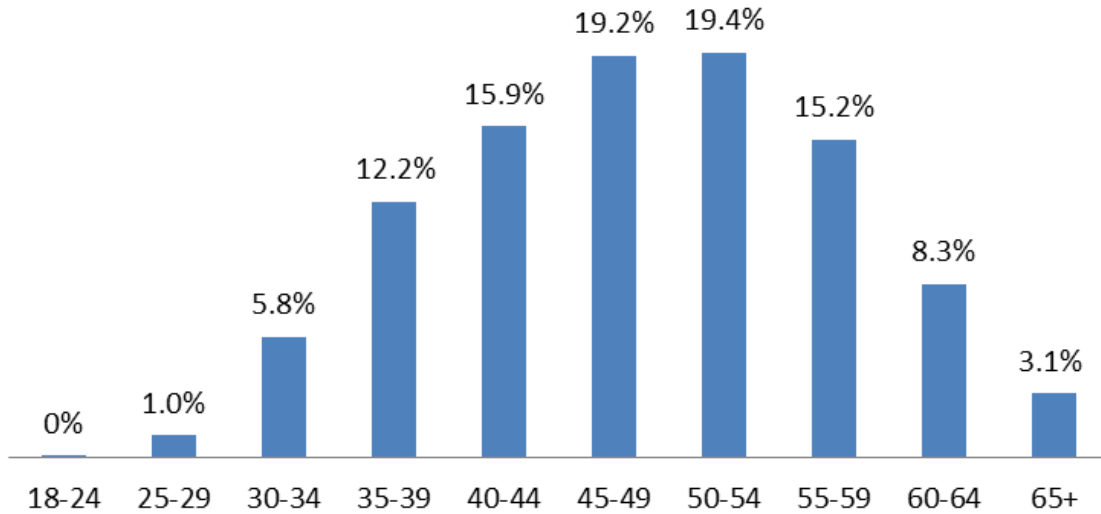
Age Range	Employee Count	Percent
-17	0	0.0%
18-24	2288	1.1%
25-29	14727	7.3%
30-34	24301	12.0%
35-39	28296	14.0%
40-44	28305	14.0%
45-49	29570	14.6%
50-54	28673	14.2%
55-59	23882	11.8%
60-64	15112	7.5%
65+	7278	3.6%
<b>Grand Total</b>	<b>202432</b>	<b>100.00%</b>

### Permanent Rank-and-File (168,949 ees)



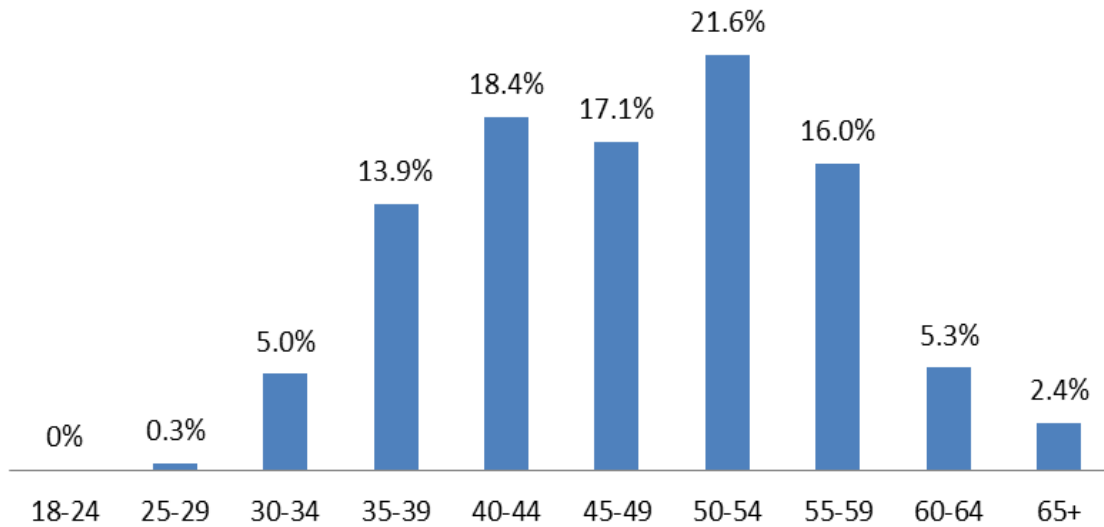
Age Range	Employee Count	Percent
-17	0	0.0%
18-24	2285	1.4%
25-29	14382	8.5%
30-34	22373	13.2%
35-39	24210	14.3%
40-44	22999	13.6%
45-49	23137	13.7%
50-54	22180	13.1%
55-59	18793	11.1%
60-64	12345	7.3%
65+	6245	3.7%
<b>Grand Total</b>	<b>168949</b>	<b>100.00%</b>

### Permanent Managers and Supervisors (33,473 ees)



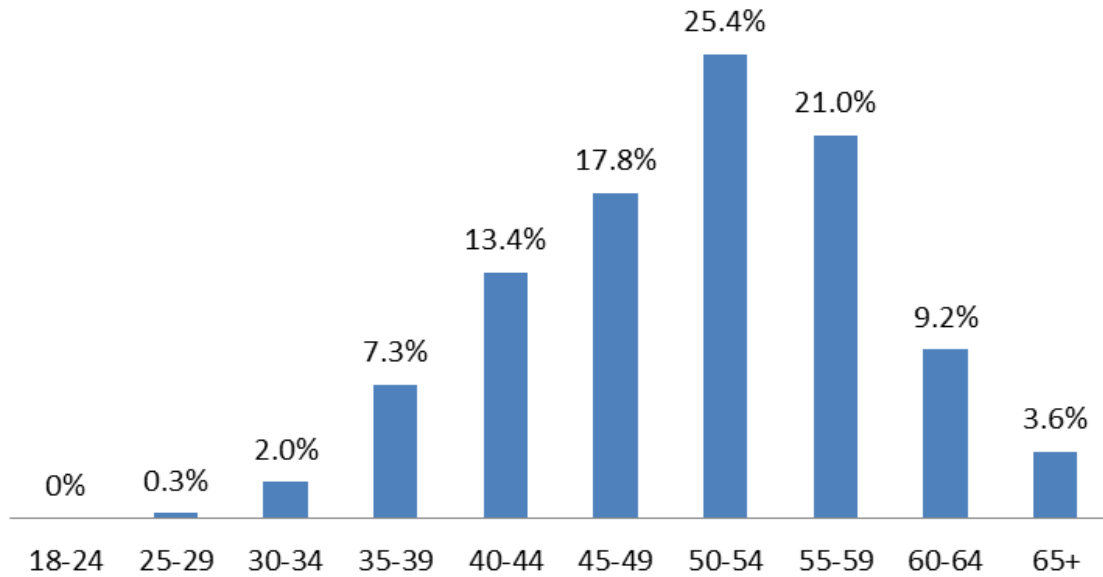
Age Range	Employee Count	Percent
-17	0	0.0%
18-24	3	0.0%
25-29	345	1.0%
30-34	1928	5.8%
35-39	4086	12.2%
40-44	5306	15.9%
45-49	6430	19.2%
50-54	6492	19.4%
55-59	5086	15.2%
60-64	2765	8.3%
65+	1032	3.1%
<b>Grand Total</b>	<b>33473</b>	<b>100.00%</b>

### Staff Services Manager IIs (620 ees)

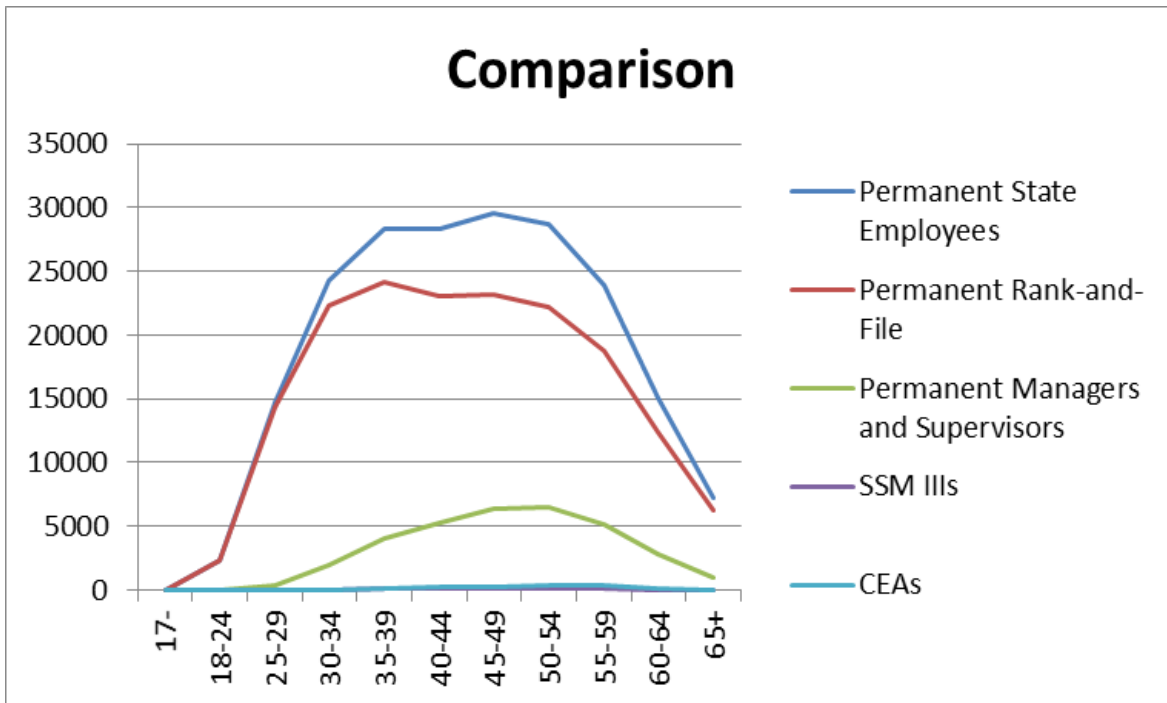


Age Range	Employee Count	Percent
-17	0	0.0%
18-24	0	0.0%
25-29	2	0.3%
30-34	31	5.0%
35-39	86	13.9%
40-44	114	18.4%
45-49	106	17.1%
50-54	134	21.6%
55-59	99	16.0%
60-64	33	5.3%
65+	15	2.4%
<b>Grand Total</b>	<b>620</b>	<b>100.00%</b>

### Career Executive Assignment (1465 ees)



Age Range	Employee Count	Percent
-17	0	0.0%
18-24	0	0.0%
25-29	4	0.3%
30-34	29	2.0%
35-39	107	7.3%
40-44	197	13.4%
45-49	261	17.8%
50-54	372	25.4%
55-59	307	21.0%
60-64	135	9.2%
65+	53	3.6%
<b>Grand Total</b>	<b>1465</b>	<b>100.00%</b>



Age Range	Permanent State Employees	Permanent Rank-and-File	Permanent Managers and Supervisors	SSM IIIs	CEAs
-17	0	0	0	0	0
18-24	2288	2285	3	0	0
25-29	14727	14382	345	2	4
30-34	24301	22373	1928	31	29
35-39	28296	24210	4086	86	107
40-44	28305	22999	5306	114	197
45-49	29570	23137	6430	106	261
50-54	28673	22180	6492	134	372
55-59	23882	18793	5086	99	307
60-64	15112	12345	2765	33	135
65+	7278	6245	1032	15	53
<b>Grand Total</b>	<b>202432</b>	<b>168949</b>	<b>33473</b>	<b>620</b>	<b>1465</b>