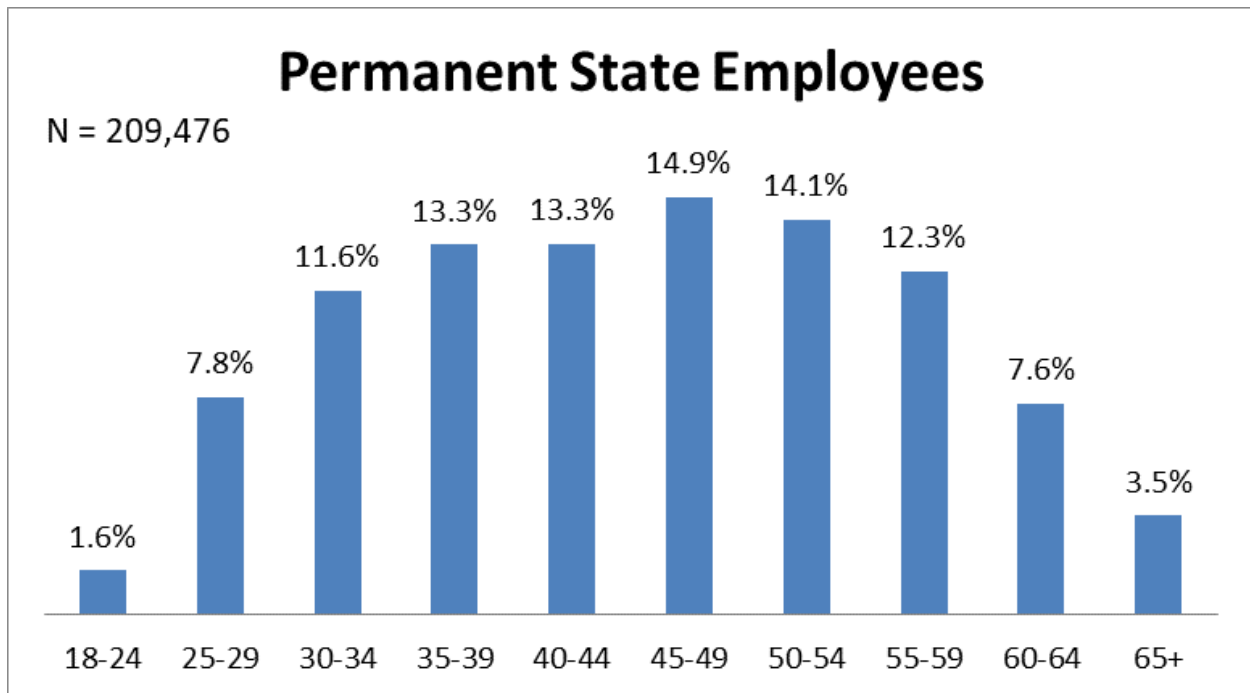


# California State Employee Age Demographics June 2019

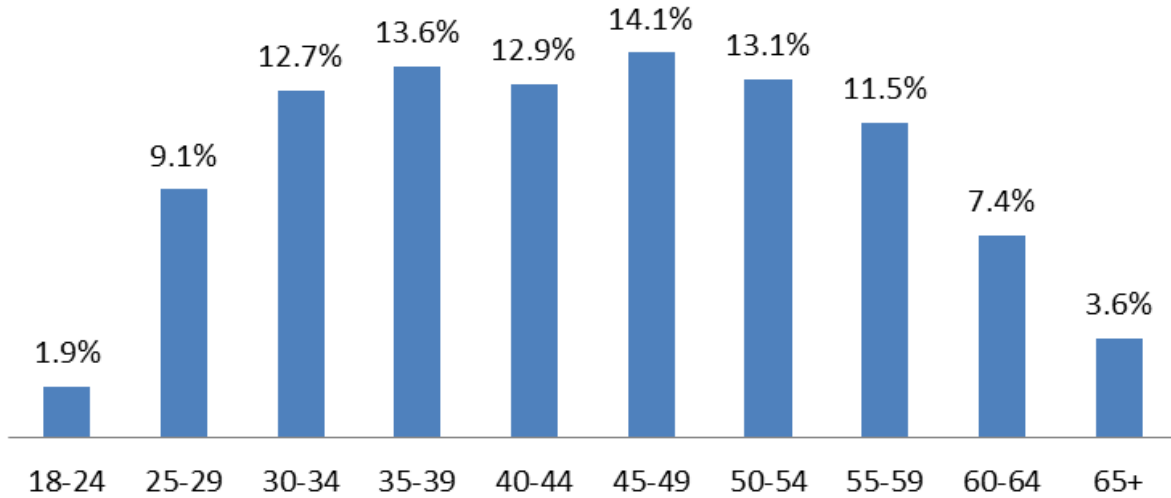
The following age demographics reflect workforce data from June 2019 for civil service employees.



Age Range	Employee Count	Percent
-17	0	0.0%
18-24	3302	1.6%
25-29	16342	7.8%
30-34	24307	11.6%
35-39	27756	13.3%
40-44	27823	13.3%
45-49	31307	14.9%
50-54	29603	14.1%
55-59	25774	12.3%
60-64	15855	7.6%
65+	7407	3.5%
<b>Grand Total</b>	<b>209476</b>	<b>100.00%</b>

## Permanent Rank-and-File

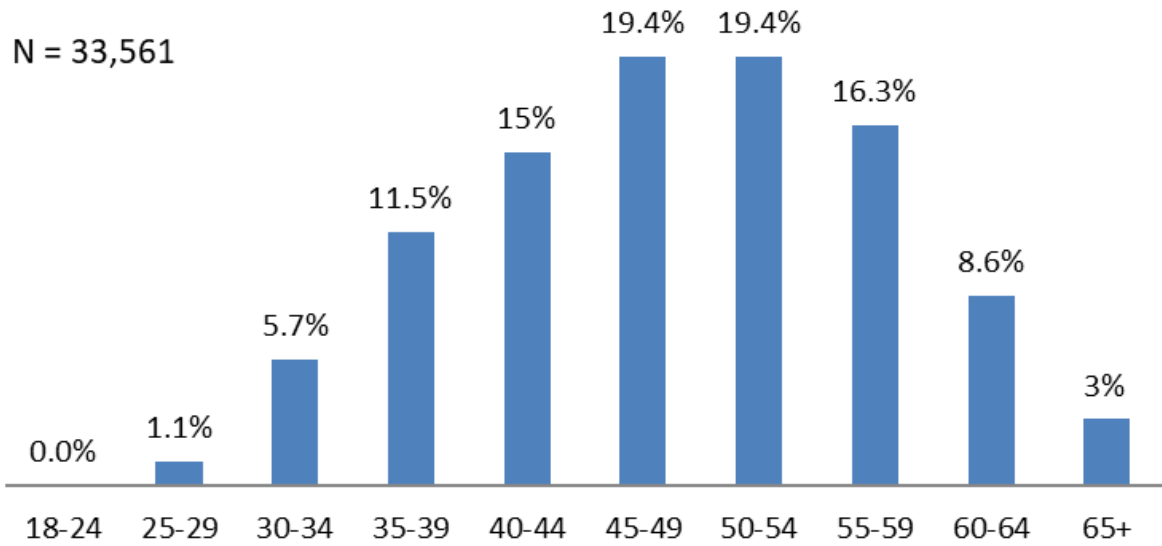
N = 175,905



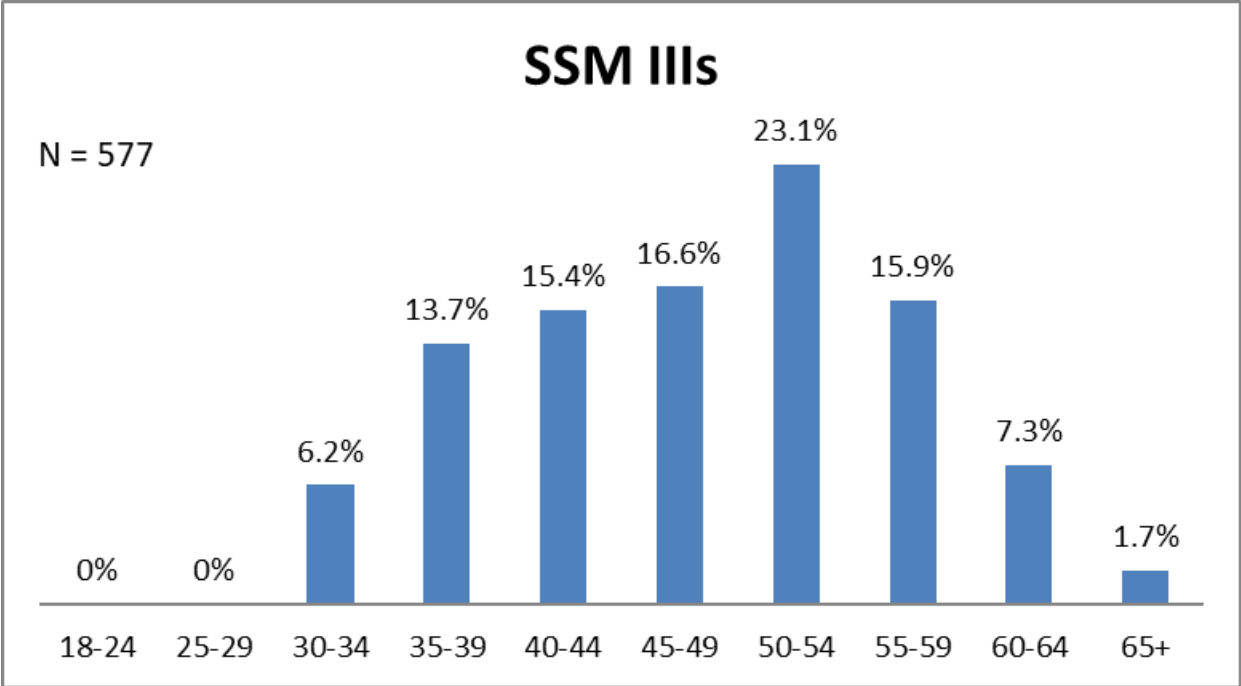
Age Range	Employee Count	Percent
-17	0	0.0%
18-24	3293	1.9%
25-29	15979	9.1%
30-34	22389	12.7%
35-39	23906	13.6%
40-44	22772	12.9%
45-49	24795	14.1%
50-54	23105	13.1%
55-59	20299	11.5%
60-64	12979	7.4%
65+	6388	3.6%
<b>Grand Total</b>	<b>175905</b>	<b>100.00%</b>

## Permanent Managers and Supervisors

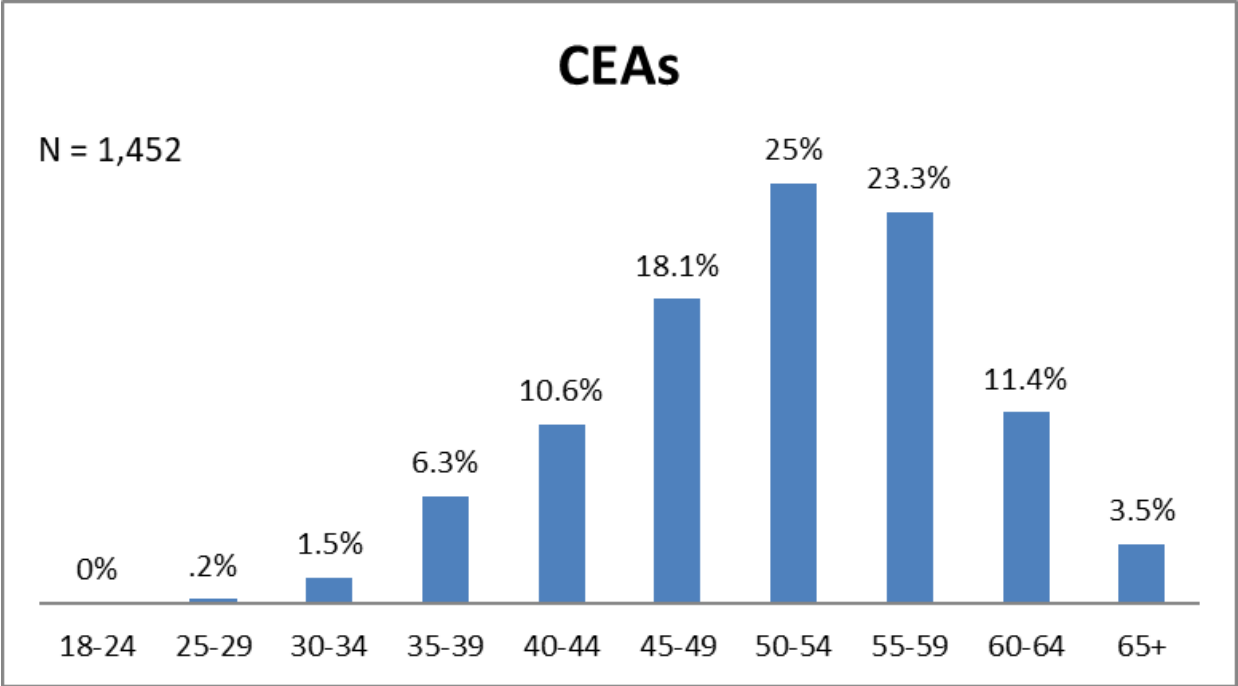
N = 33,561



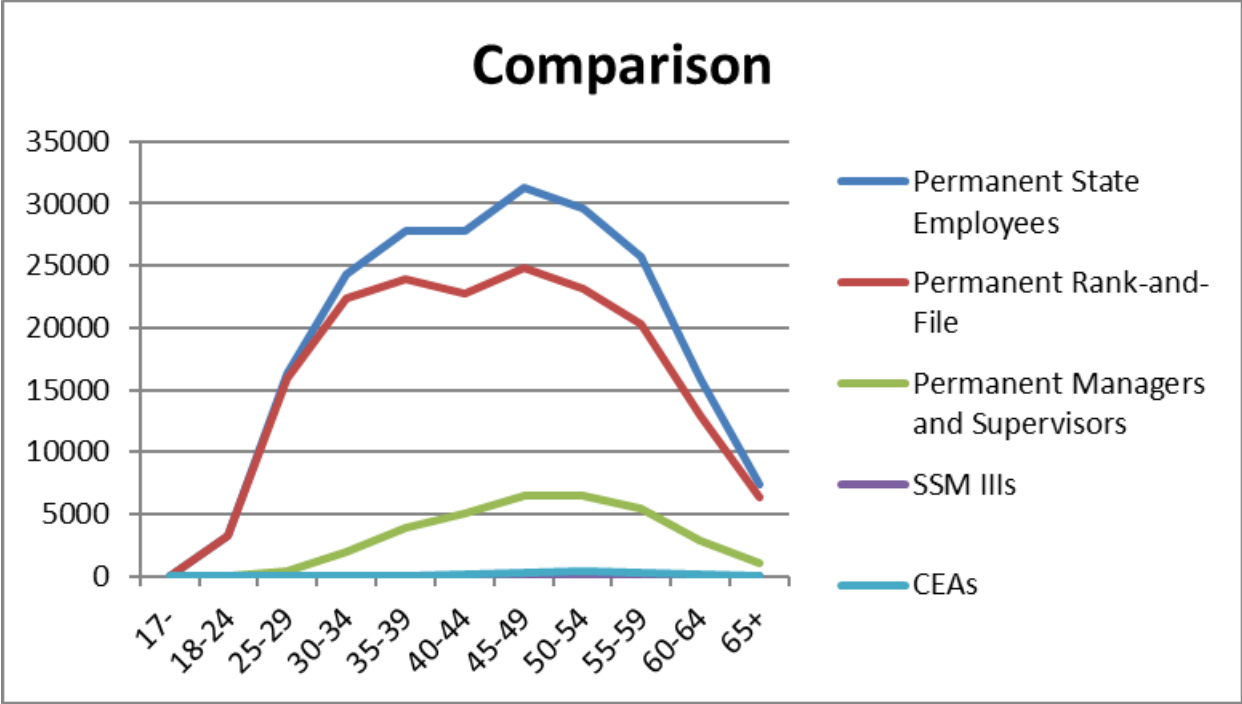
Age Range	Employee Count	Percent
-17	0	0.0%
18-24	9	0.0%
25-29	363	1.1%
30-34	1918	5.7%
35-39	3850	11.5%
40-44	5048	15.0%
45-49	6512	19.4%
50-54	6497	19.4%
55-59	5470	16.3%
60-64	2875	8.6%
65+	1019	3.0%
<b>Grand Total</b>	<b>33561</b>	<b>100.00%</b>



Age Range	Employee Count	Percent
-17	0	0.0%
18-24	0	0.0%
25-29	0	0.0%
30-34	36	6.2%
35-39	79	13.7%
40-44	89	15.4%
45-49	96	16.6%
50-54	133	23.1%
55-59	92	15.9%
60-64	42	7.3%
65+	10	1.7%
<b>Grand Total</b>	<b>577</b>	<b>100.00%</b>

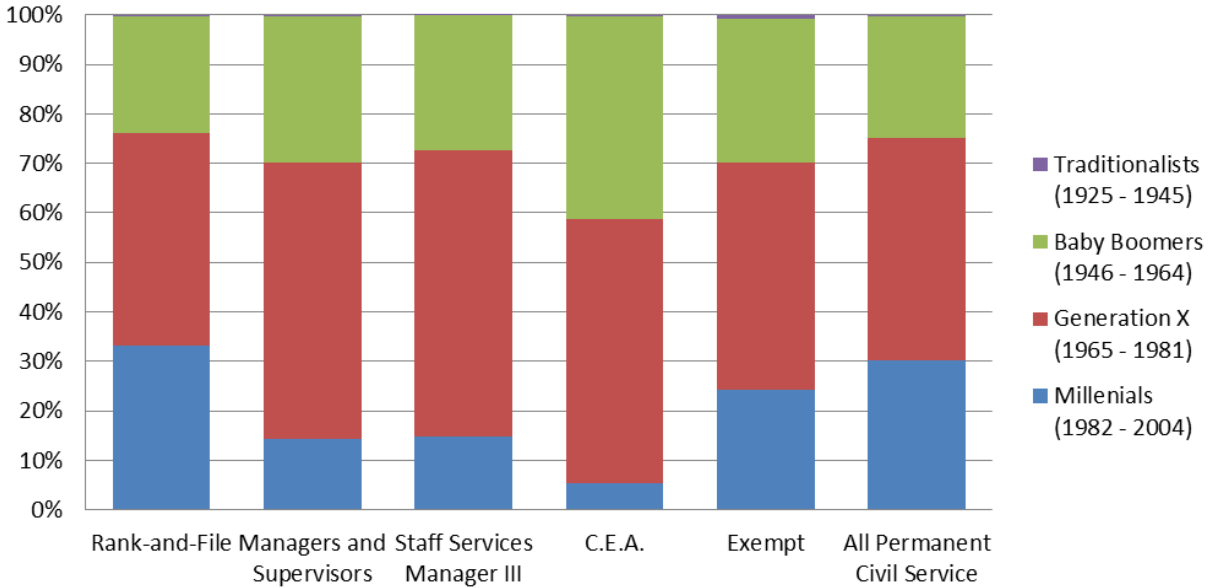


Age Range	Employee Count	Percent
-17	0	0.0%
18-24	0	0.0%
25-29	3	0.2%
30-34	22	1.5%
35-39	92	6.3%
40-44	154	10.6%
45-49	263	18.1%
50-54	363	25.0%
55-59	339	23.3%
60-64	165	11.4%
65+	51	3.5%
<b>Grand Total</b>	<b>1452</b>	<b>100.00%</b>



Age Range	Permanent State Employees	Permanent Rank-and-File	Permanent Managers and Supervisors	SSM IIIs	CEAs
-17	0	0	0	0	0
18-24	3302	3293	9	0	0
25-29	16342	15979	363	0	3
30-34	24307	22389	1918	36	22
35-39	27756	23906	3850	79	92
40-44	27823	22772	5048	89	154
45-49	31307	24795	6512	96	263
50-54	29603	23105	6497	133	363
55-59	25774	20299	5470	92	339
60-64	15855	12979	2875	42	165
65+	7407	6388	1019	10	51
<b>Grand Total</b>	<b>209476</b>	<b>175905</b>	<b>33561</b>	<b>577</b>	<b>1452</b>

## Generational Breakout - Statewide



Cohort Groupings	Millennials (1982 - 2004)	Generation X (1965 - 1981)	Baby Boomers (1946 - 1964)	Traditionalists (1925 - 1945)
<b>Rank-and-File</b>	58465	75586	41250	604
<b>Managers and Supervisors</b>	4825	18704	9954	78
<b>Staff Services Manager III</b>	86	333	157	1
<b>C.E.A.</b>	78	774	596	4
<b>Exempt</b>	906	1701	1086	29
<b>All Permanent Civil Service</b>	<b>63289</b>	<b>94294</b>	<b>51210</b>	<b>682</b>