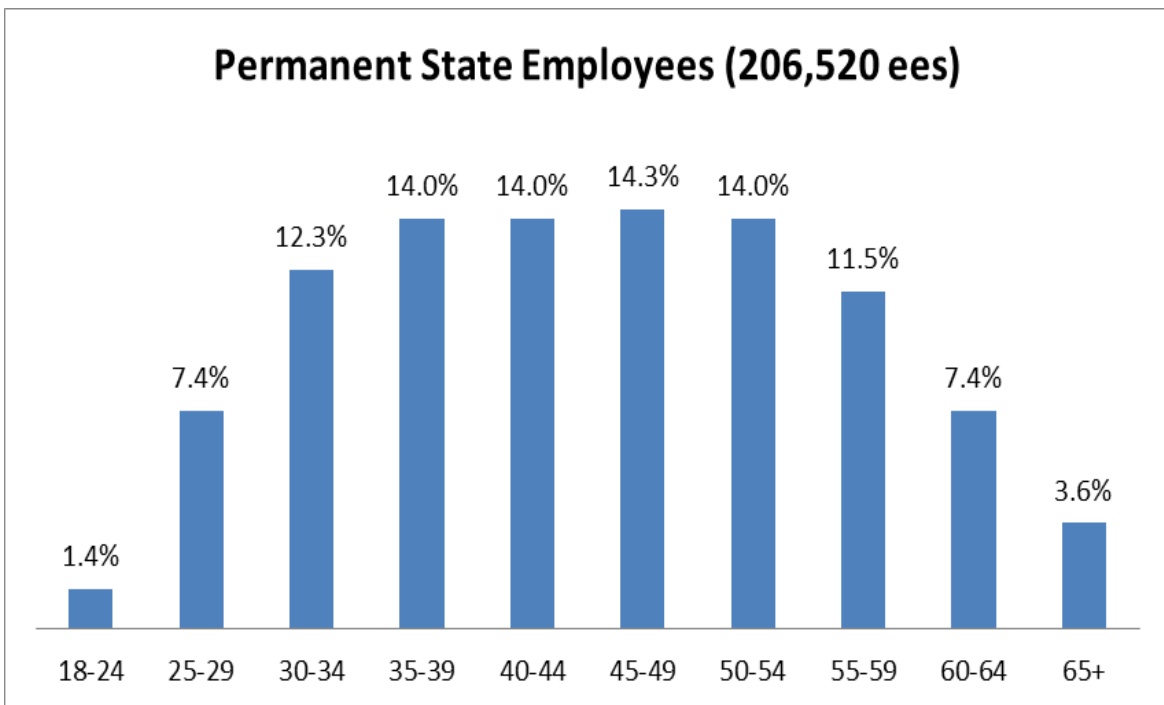


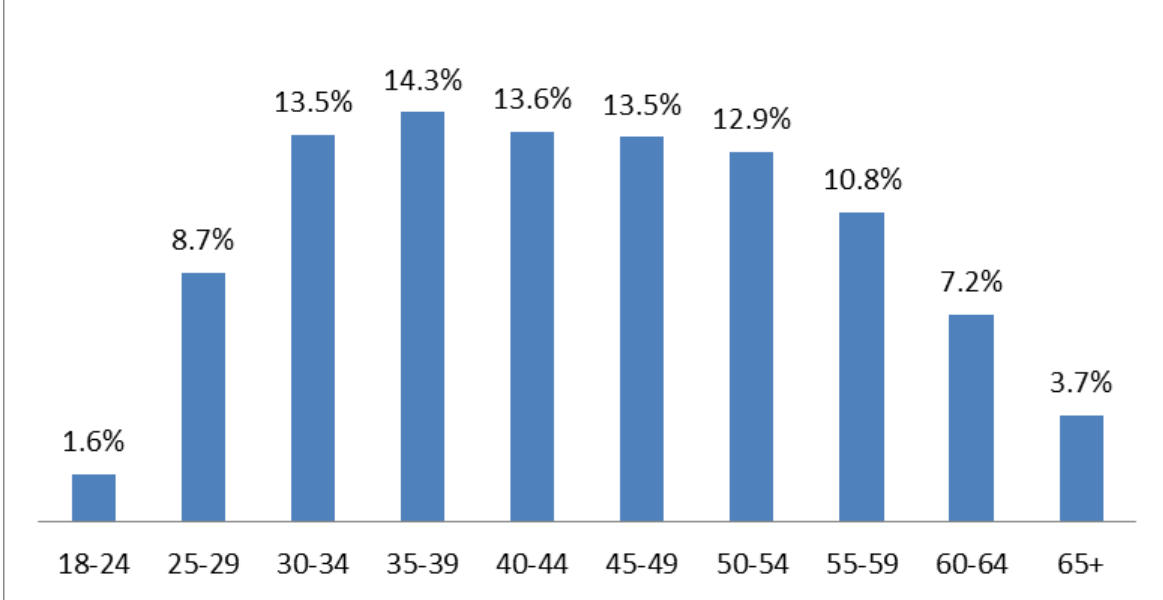
California State Employee Age Demographics June 2021

The following age demographics reflect workforce data from June 2021 for civil service employees.



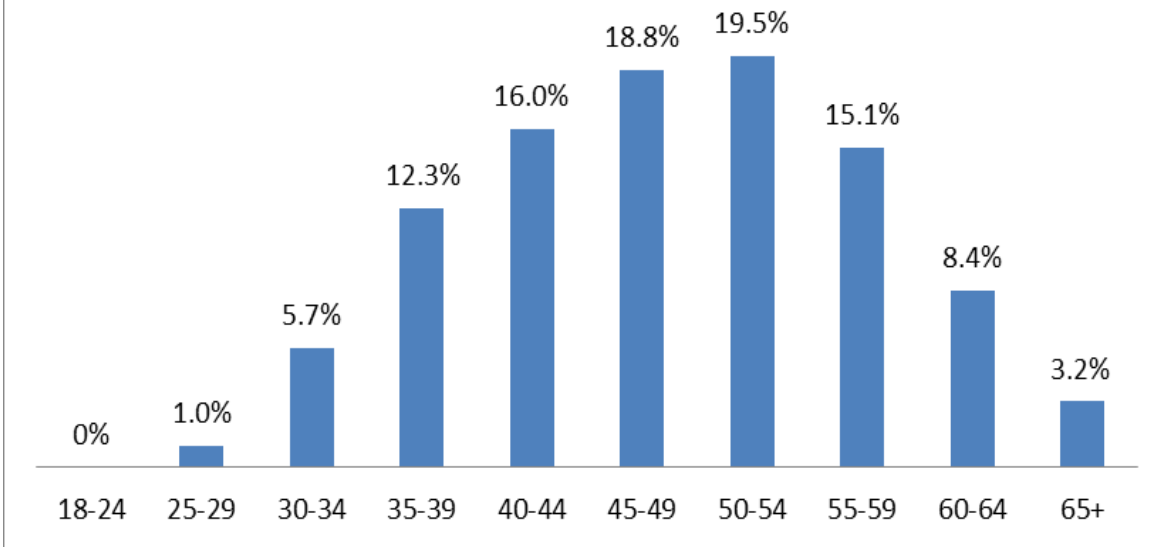
Age Range	Employee Count	Percent
-17	0	0.0%
18-24	2833	1.4%
25-29	15364	7.4%
30-34	25307	12.3%
35-39	28887	14.0%
40-44	28964	14.0%
45-49	29619	14.3%
50-54	28961	14.0%
55-59	23803	11.5%
60-64	15338	7.4%
65+	7444	3.6%
Grand Total	206520	100.00%

Permanent Rank-and-File (172,581 ees)

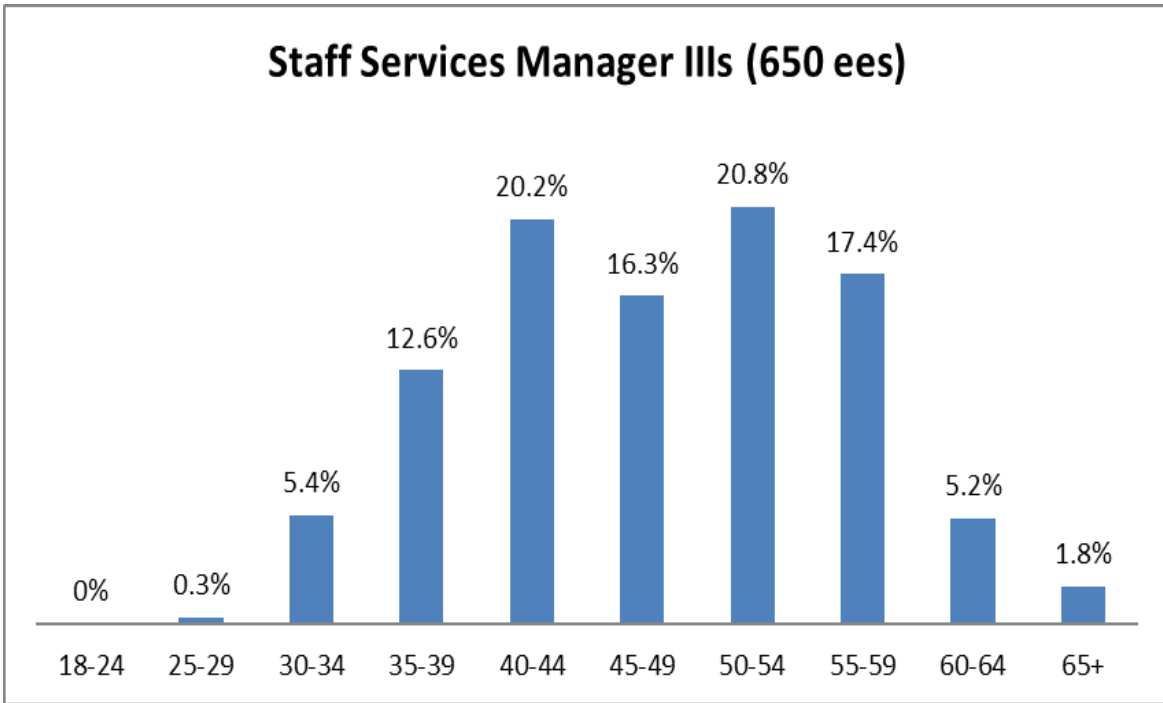


Age Range	Employee Count	Percent
-17	0	0.0%
18-24	2827	1.6%
25-29	15009	8.7%
30-34	23377	13.5%
35-39	24720	14.3%
40-44	23536	13.6%
45-49	23231	13.5%
50-54	22348	12.9%
55-59	18667	10.8%
60-64	12494	7.2%
65+	6372	3.7%
Grand Total	172581	100.00%

Permanent Managers and Supervisors (33,929 ees)

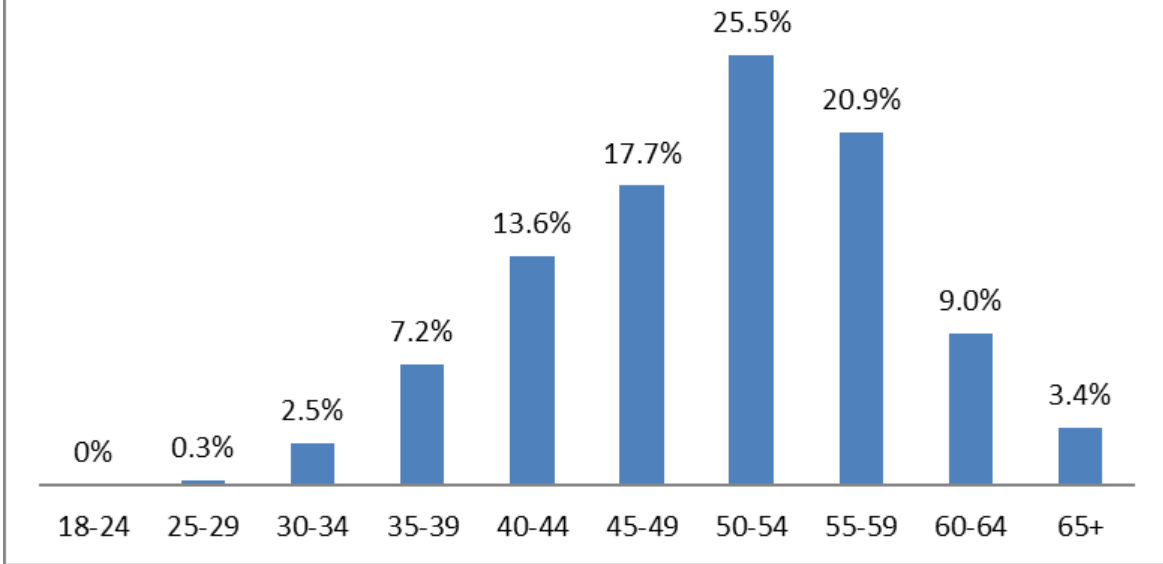


Age Range	Employee Count	Percent
-17	0	0.0%
18-24	6	0.0%
25-29	355	1.0%
30-34	1930	5.7%
35-39	4167	12.3%
40-44	5428	16.0%
45-49	6385	18.8%
50-54	6612	19.5%
55-59	5132	15.1%
60-64	2842	8.4%
65+	1072	3.2%
Grand Total	33929	100.00%

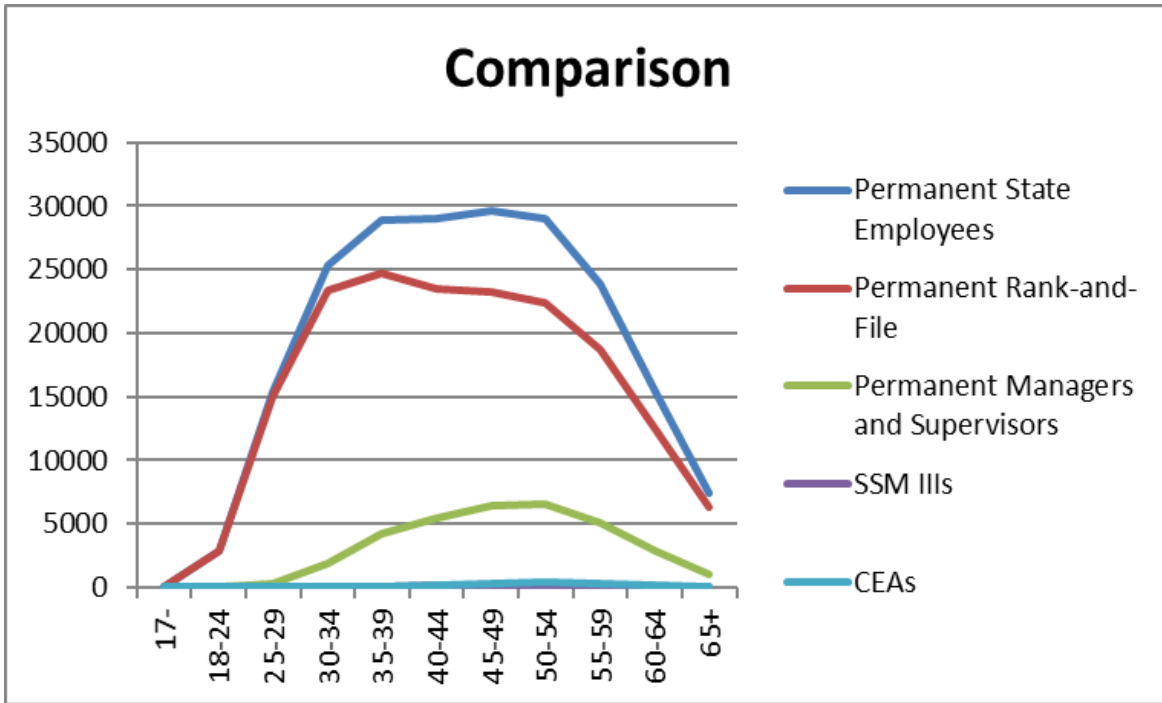


Age Range	Employee Count	Percent
-17	0	0.0%
18-24	0	0.0%
25-29	2	0.3%
30-34	35	5.4%
35-39	82	12.6%
40-44	131	20.2%
45-49	106	16.3%
50-54	135	20.8%
55-59	113	17.4%
60-64	34	5.2%
65+	12	1.8%
Grand Total	650	100.00%

Career Executive Assignment (1,534 ees)



Age Range	Employee Count	Percent
-17	0	0.0%
18-24	0	0.0%
25-29	4	0.3%
30-34	38	2.5%
35-39	110	7.2%
40-44	208	13.6%
45-49	272	17.7%
50-54	391	25.5%
55-59	321	20.9%
60-64	138	9.0%
65+	52	3.4%
Grand Total	1534	100.00%



Age Range	Permanent State Employees	Permanent Rank-and-File	Permanent Managers and Supervisors	SSM IIIs	CEAs
-17	0	0	0	0	0
18-24	2833	2827	6	0	0
25-29	15364	15009	355	2	4
30-34	25307	23377	1930	35	38
35-39	28887	24720	4167	82	110
40-44	28964	23536	5428	131	208
45-49	29619	23231	6385	106	272
50-54	28961	22348	6612	135	391
55-59	23803	18667	5132	113	321
60-64	15338	12494	2842	34	138
65+	7444	6372	1072	12	52
Grand Total	206520	172581	33929	650	1534