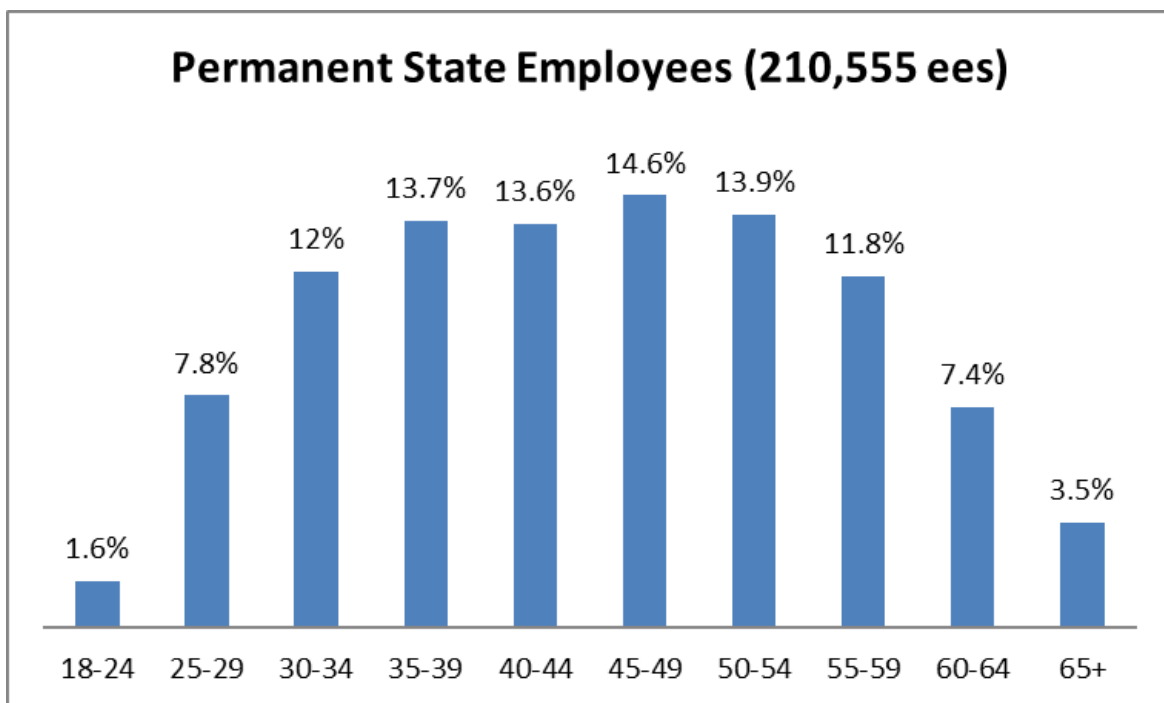


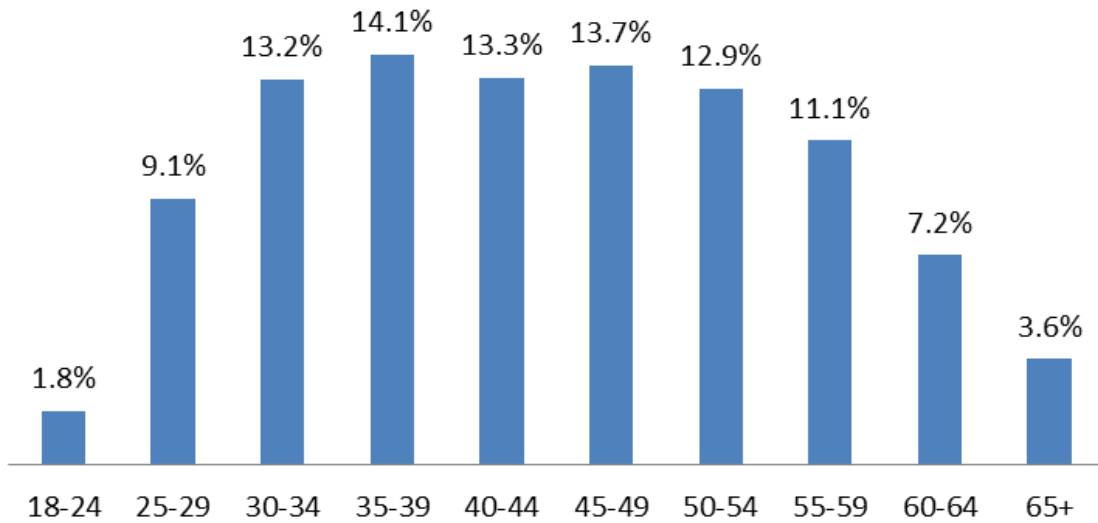
California State Employee Age Demographics June 2020

The following age demographics reflect workforce data from June 2020 for civil service employees.



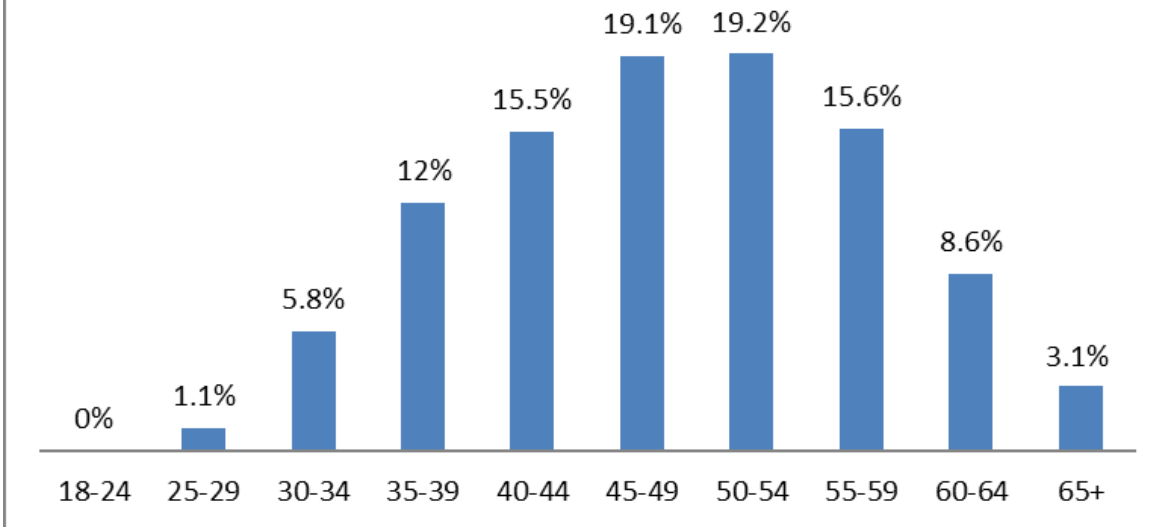
Age Range	Employee Count	Percent
-17	0	0.0%
18-24	3266	1.6%
25-29	16458	7.8%
30-34	25284	12.0%
35-39	28901	13.7%
40-44	28656	13.6%
45-49	30671	14.6%
50-54	29316	13.9%
55-59	24941	11.8%
60-64	15603	7.4%
65+	7459	3.5%
Grand Total	210555	100.00%

Permanent Rank-and-File (176,540 ees)



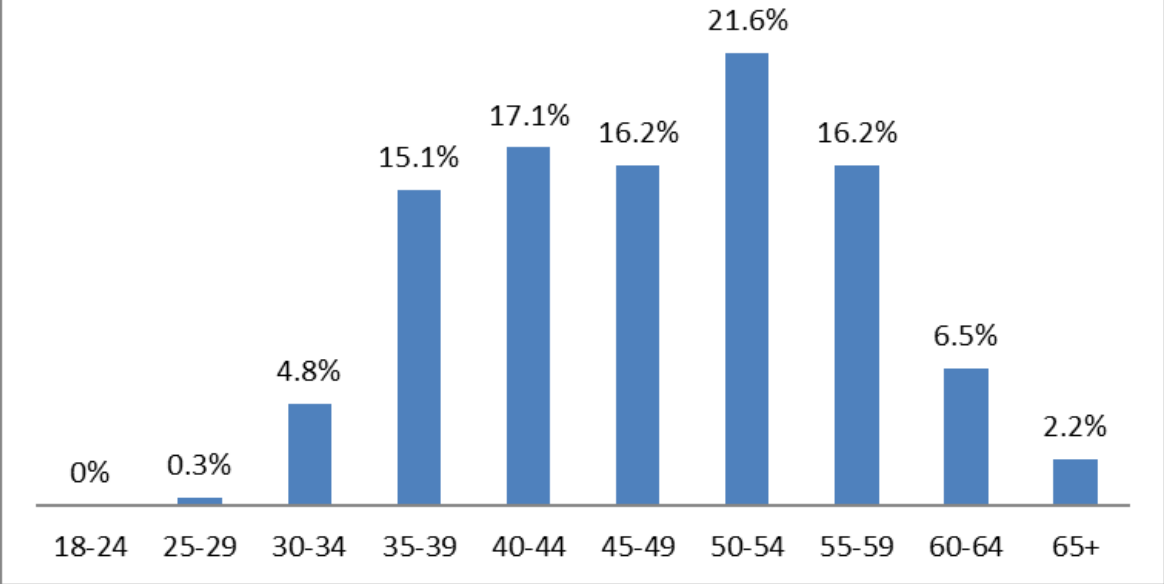
Age Range	Employee Count	Percent
-17	0	0.0%
18-24	3262	1.8%
25-29	16096	9.1%
30-34	23324	13.2%
35-39	24816	14.1%
40-44	23397	13.3%
45-49	24161	13.7%
50-54	22775	12.9%
55-59	19622	11.1%
60-64	12690	7.2%
65+	6397	3.6%
Grand Total	176540	100.00%

**Permanent Managers and Supervisors
(34,005 ees)**



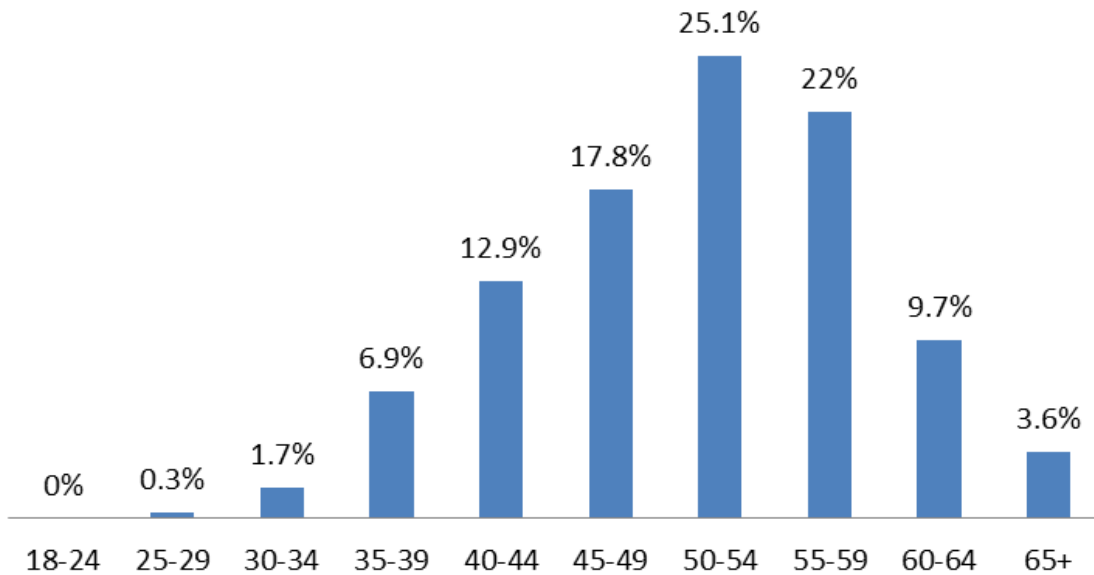
Age Range	Employee Count	Percent
-17	0	0.0%
18-24	4	0.0%
25-29	362	1.1%
30-34	1960	5.8%
35-39	4085	12.0%
40-44	5257	15.5%
45-49	6508	19.1%
50-54	6541	19.2%
55-59	5315	15.6%
60-64	2911	8.6%
65+	1062	3.1%
Grand Total	34005	100.00%

Staff Services Manager III (598 ees)

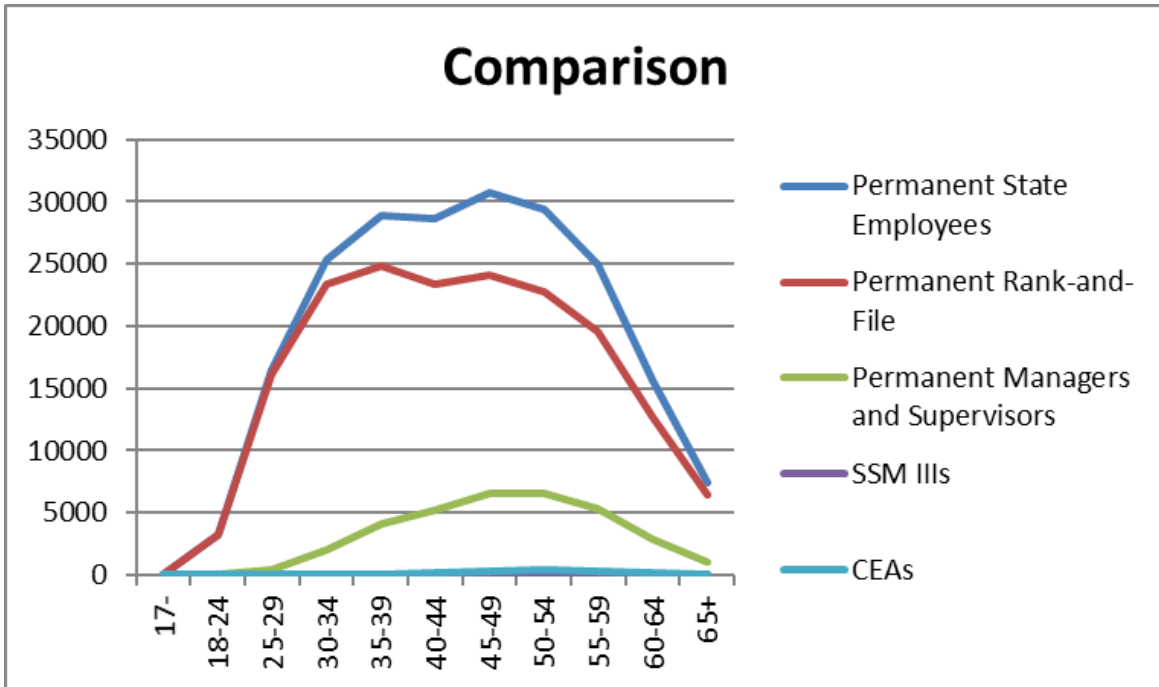


Age Range	Employee Count	Percent
-17	0	0.0%
18-24	0	0.0%
25-29	2	0.3%
30-34	29	4.8%
35-39	90	15.1%
40-44	102	17.1%
45-49	97	16.2%
50-54	129	21.6%
55-59	97	16.2%
60-64	39	6.5%
65+	13	2.2%
Grand Total	598	100.00%

Career Executive Assignment (1,485 ees)



Age Range	Employee Count	Percent
-17	0	0.0%
18-24	0	0.0%
25-29	5	0.3%
30-34	25	1.7%
35-39	102	6.9%
40-44	191	12.9%
45-49	265	17.8%
50-54	372	25.1%
55-59	327	22.0%
60-64	144	9.7%
65+	54	3.6%
Grand Total	1485	100.00%



Age Range	Permanent State Employees	Permanent Rank-and-File	Permanent Managers and Supervisors	SSM III's	CEAs
-17	0	0	0	0	0
18-24	3266	3262	4	0	0
25-29	16458	16096	362	2	5
30-34	25284	23324	1960	29	25
35-39	28901	24816	4085	90	102
40-44	28656	23397	5257	102	191
45-49	30671	24161	6508	97	265
50-54	29316	22775	6541	129	372
55-59	24941	19622	5315	97	327
60-64	15603	12690	2911	39	144
65+	7459	6397	1062	13	54
Grand Total	210555	176540	34005	598	1485