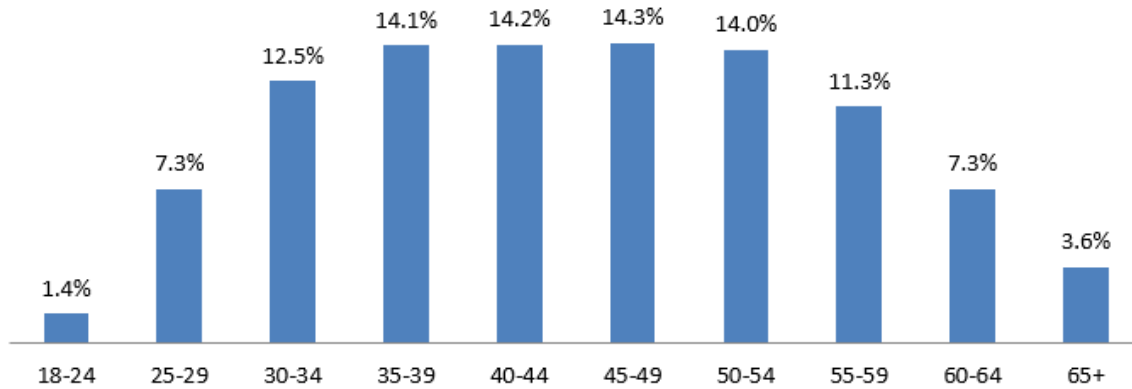


California State Employee Age Demographics December 2021

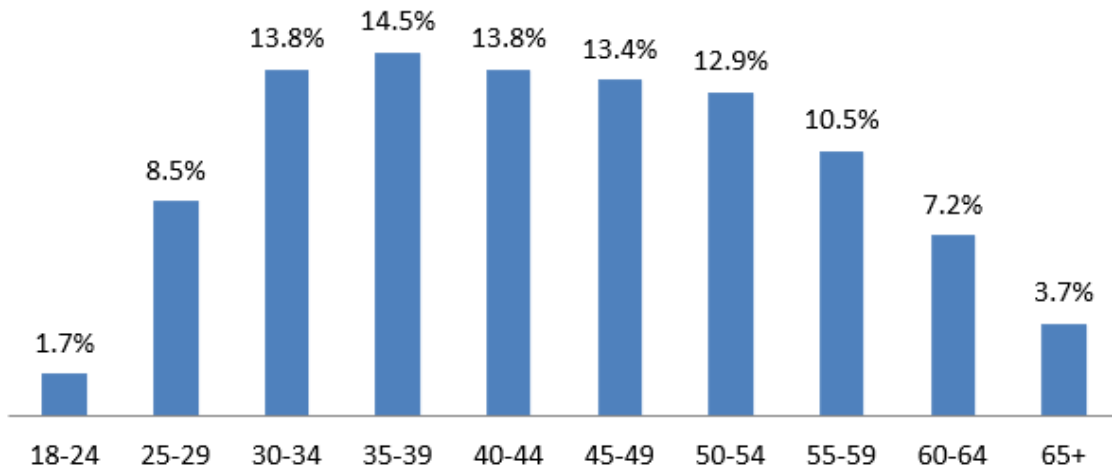
The following age demographics reflect workforce data from December 2021 for civil service employees.

Permanent State Employees (205,941 ees)



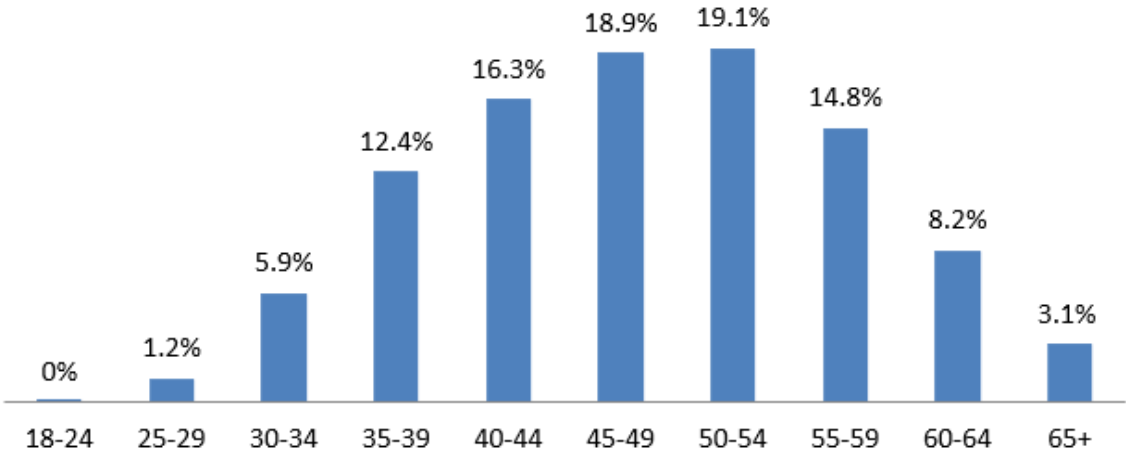
Age Range	Employee Count	Percent
-17	0	0.0%
18-24	2863	1.4%
25-29	15063	7.3%
30-34	25679	12.5%
35-39	29138	14.1%
40-44	29293	14.2%
45-49	29456	14.3%
50-54	28731	14.0%
55-59	23175	11.3%
60-64	15135	7.3%
65+	7408	3.6%
Grand Total	205941	100.00%

Permanent Rank-and-File (171,393 ees)



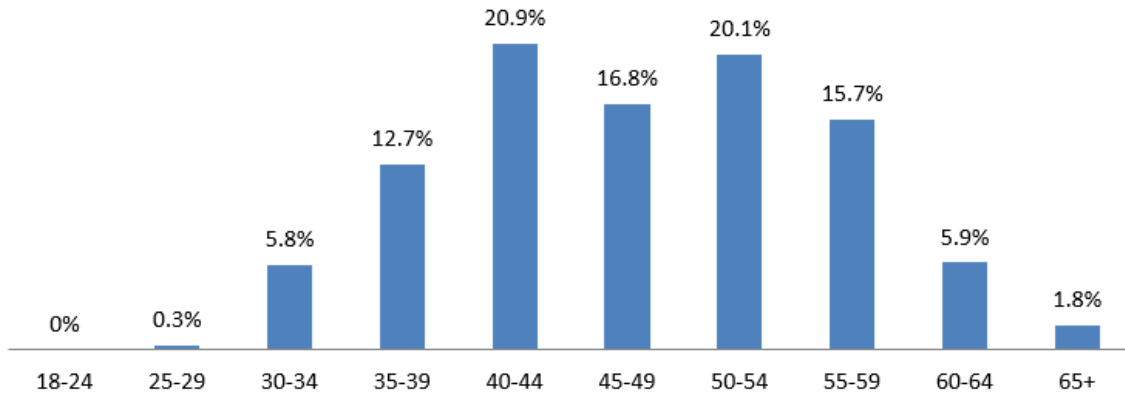
Age Range	Employee Count	Percent
-17	0	0.0%
18-24	2860	1.7%
25-29	14639	8.5%
30-34	23646	13.8%
35-39	24839	14.5%
40-44	23647	13.8%
45-49	22939	13.4%
50-54	22131	12.9%
55-59	18060	10.5%
60-64	12303	7.2%
65+	6329	3.7%
Grand Total	171393	100.00%

**Permanent Managers and Supervisors
(34,538 ees)**



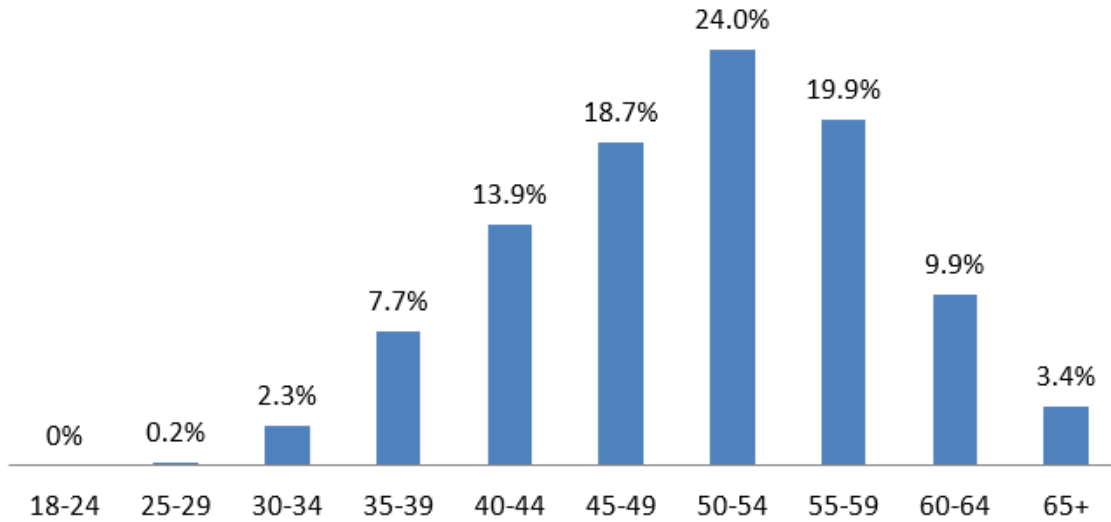
Age Range	Employee Count	Percent
-17	0	0.0%
18-24	3	0.0%
25-29	424	1.2%
30-34	2033	5.9%
35-39	4299	12.4%
40-44	5646	16.3%
45-49	6515	18.9%
50-54	6599	19.1%
55-59	5112	14.8%
60-64	2828	8.2%
65+	1079	3.1%
Grand Total	34538	100.00 %

Staff Services Manager IIIs (655 ees)



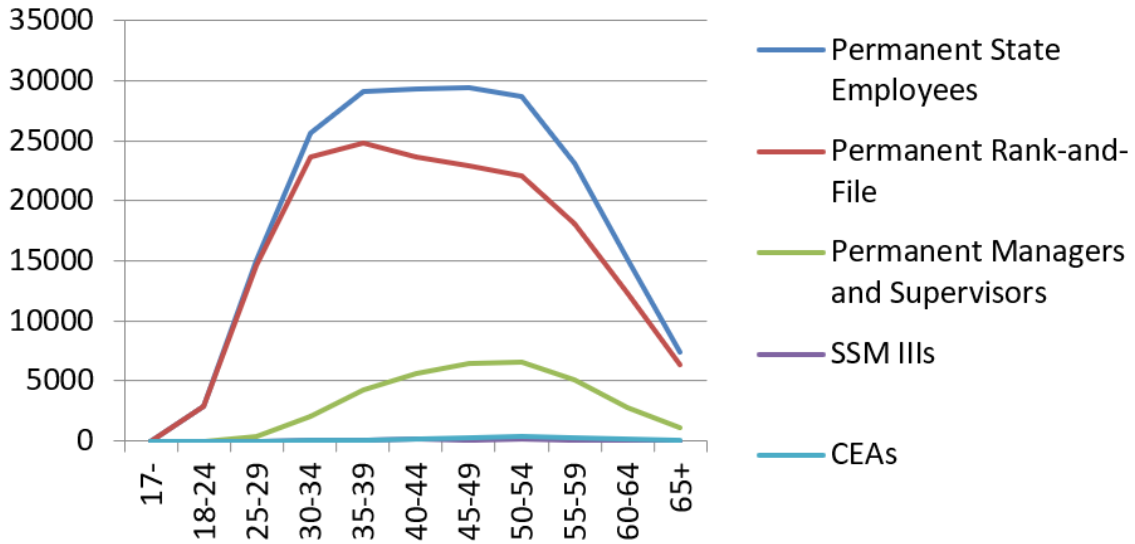
Age Range	Employee Count	Percent
-17	0	0.0%
18-24	0	0.0%
25-29	2	0.3%
30-34	38	5.8%
35-39	83	12.7%
40-44	137	20.9%
45-49	110	16.8%
50-54	132	20.2%
55-59	103	15.7%
60-64	39	6.0%
65+	11	1.7%
Grand Total	655	100.00%

Career Executive Assignment (1,576 ees)



Age Range	Employee Count	Percent
-17	0	0.0%
18-24	0	0.0%
25-29	3	0.2%
30-34	36	2.3%
35-39	122	7.7%
40-44	219	13.9%
45-49	294	18.7%
50-54	378	24.5%
55-59	314	19.9%
60-64	156	9.9%
65+	54	3.4%
Grand Total	1576	100.00%

Comparison



Age Range	Permanent State Employees	Permanent Rank-and-File	Permanent Managers and Supervisors	SSM IIIs	CEAs
-17	0	0	0	0	0
18-24	2863	2860	3	0	0
25-29	15063	14639	424	2	3
30-34	25679	23646	2033	38	36
35-39	29138	24839	4299	83	122
40-44	29293	23647	5646	137	219
45-49	29456	22939	6515	110	294
50-54	28731	22131	6599	132	378
55-59	23175	18060	5112	103	314
60-64	15135	12303	2828	39	156
65+	7408	6329	1079	12	54
Grand Total	205941	171393	34538	656	1576