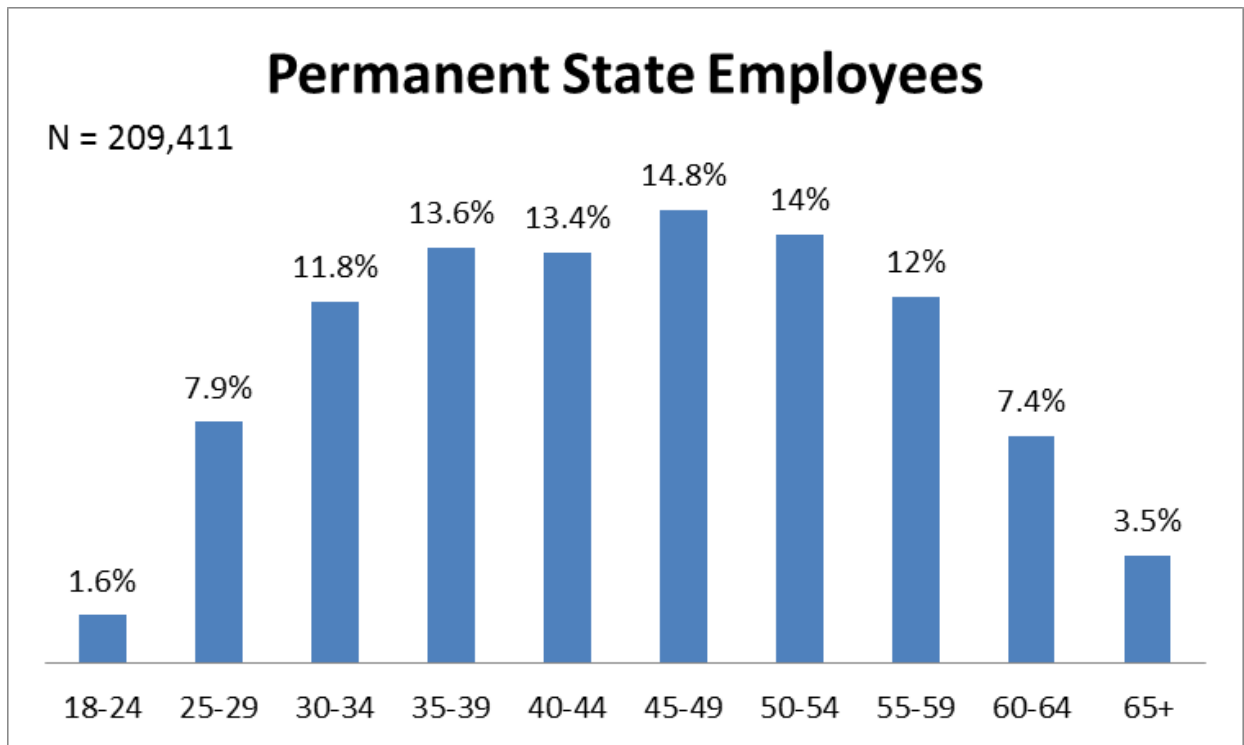


California State Employee Age Demographics December 2019

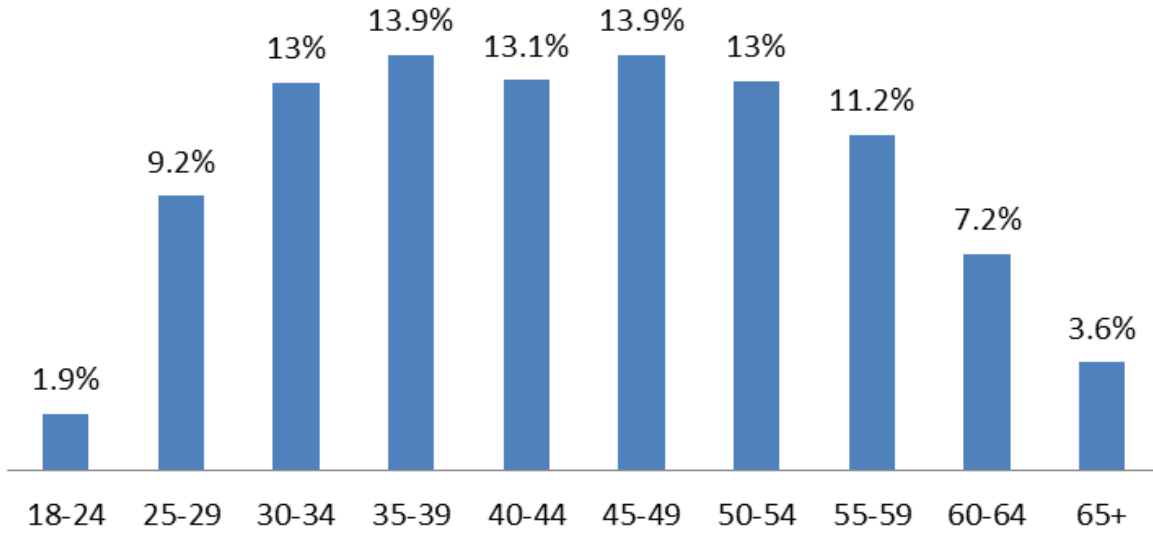
The following age demographics reflect workforce data from December 2019 for civil service employees.



Age Range	Employee Count	Percent
-17	0	0.0%
18-24	3298	1.6%
25-29	16511	7.9%
30-34	24766	11.8%
35-39	28397	13.6%
40-44	28078	13.4%
45-49	30987	14.8%
50-54	29343	14.0%
55-59	25092	12.0%
60-64	15587	7.4%
65+	7352	3.5%
Grand Total	209411	100.00%

Permanent Rank-and-File

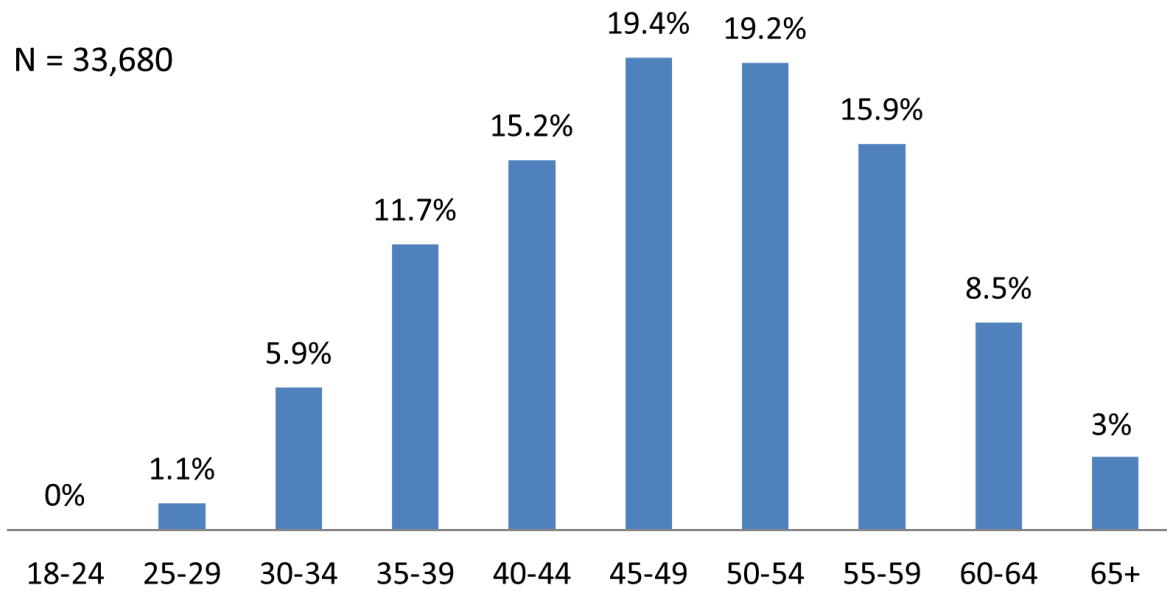
N = 175,721



Age Range	Employee Count	Percent
-17	0	0.0%
18-24	3292	1.9%
25-29	16142	9.2%
30-34	22795	13.0%
35-39	24440	13.9%
40-44	22950	13.1%
45-49	24442	13.9%
50-54	22870	13.0%
55-59	19738	11.2%
60-64	12713	7.2%
65+	6339	3.6%
Grand Total	175721	100.00%

Permanent Managers and Supervisors

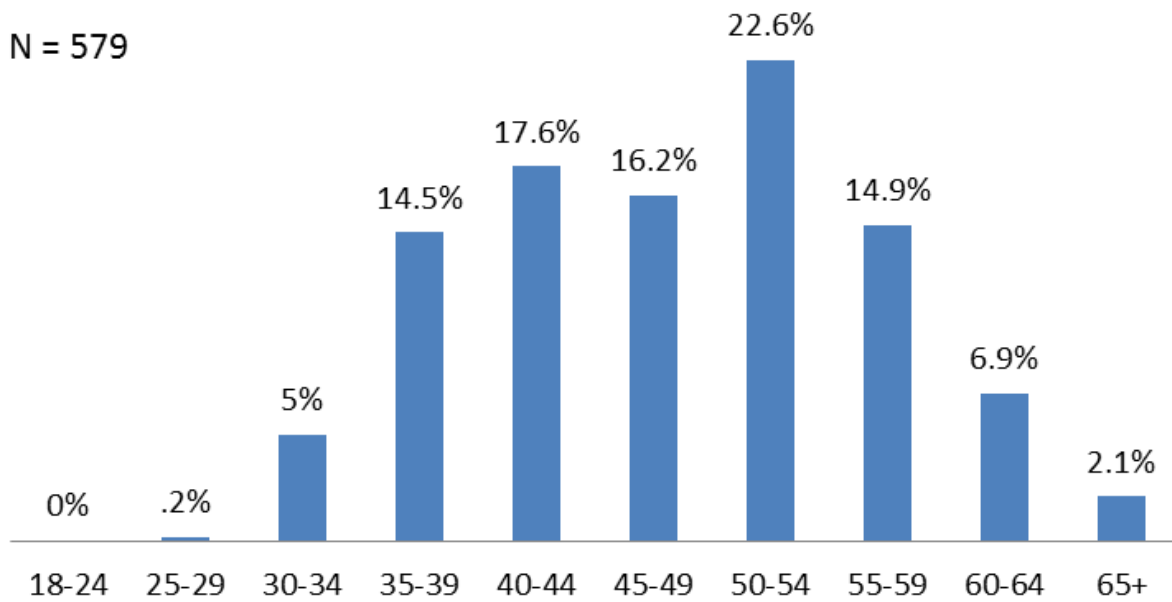
N = 33,680



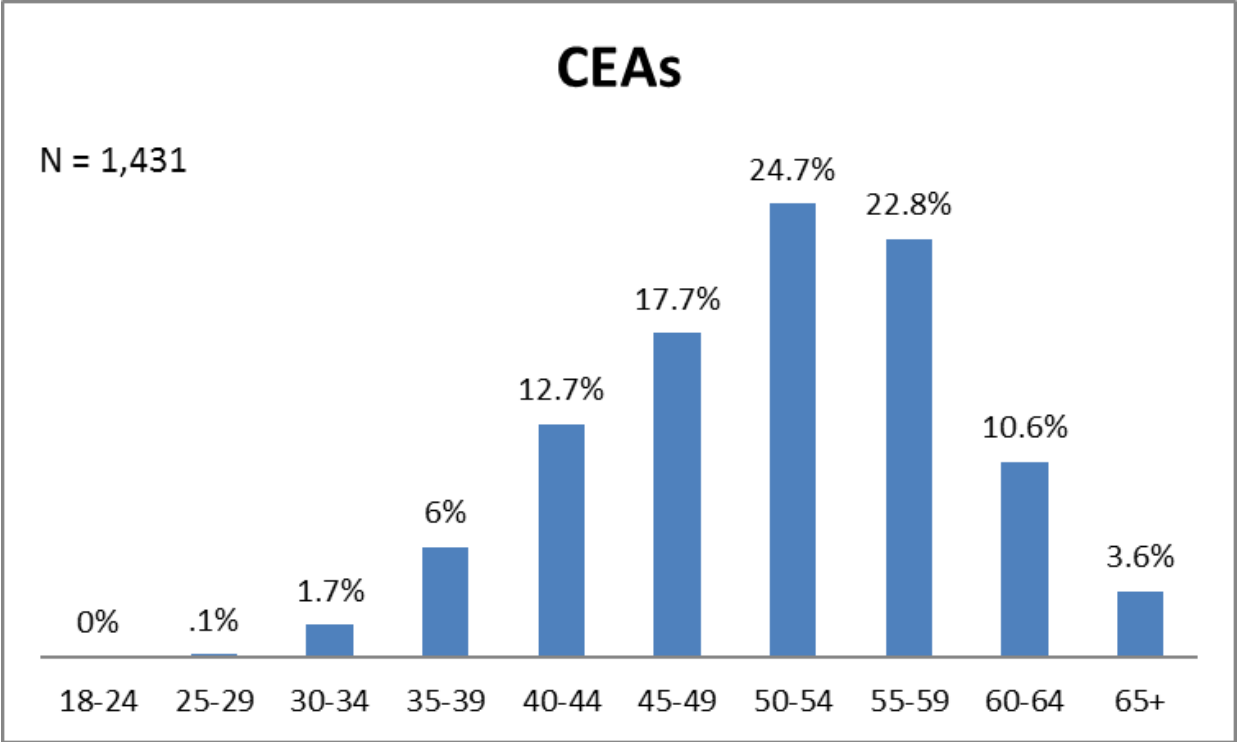
Age Range	Employee Count	Percent
-17	0	0.0%
18-24	6	0.0%
25-29	369	1.1%
30-34	1971	5.9%
35-39	3957	11.7%
40-44	5125	15.2%
45-49	6544	19.4%
50-54	6472	19.2%
55-59	5350	15.9%
60-64	2873	8.5%
65+	1013	3.0%
Grand Total	33680	100.00%

SSM IIIs

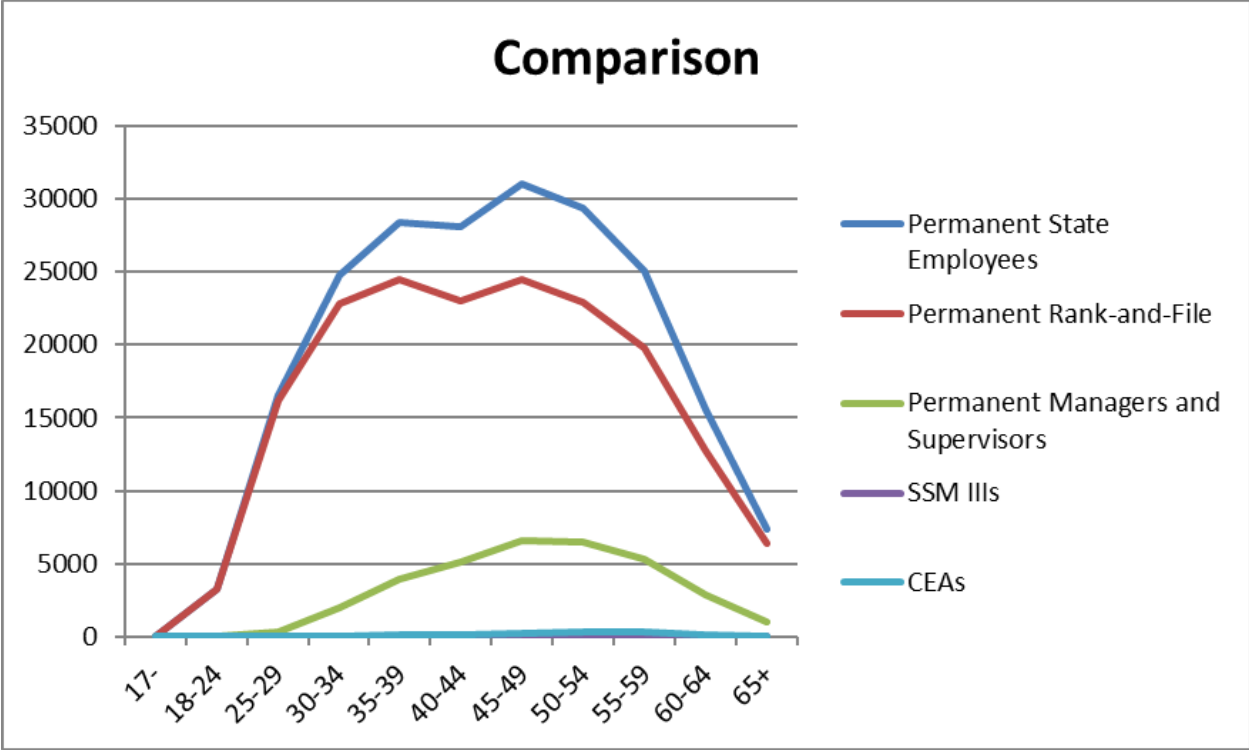
N = 579



Age Range	Employee Count	Percent
-17	0	0.0%
18-24	0	0.0%
25-29	1	0.2%
30-34	29	5.0%
35-39	84	14.5%
40-44	102	17.6%
45-49	94	16.2%
50-54	131	22.6%
55-59	86	14.9%
60-64	40	6.9%
65+	12	2.1%
Grand Total	579	100.00%

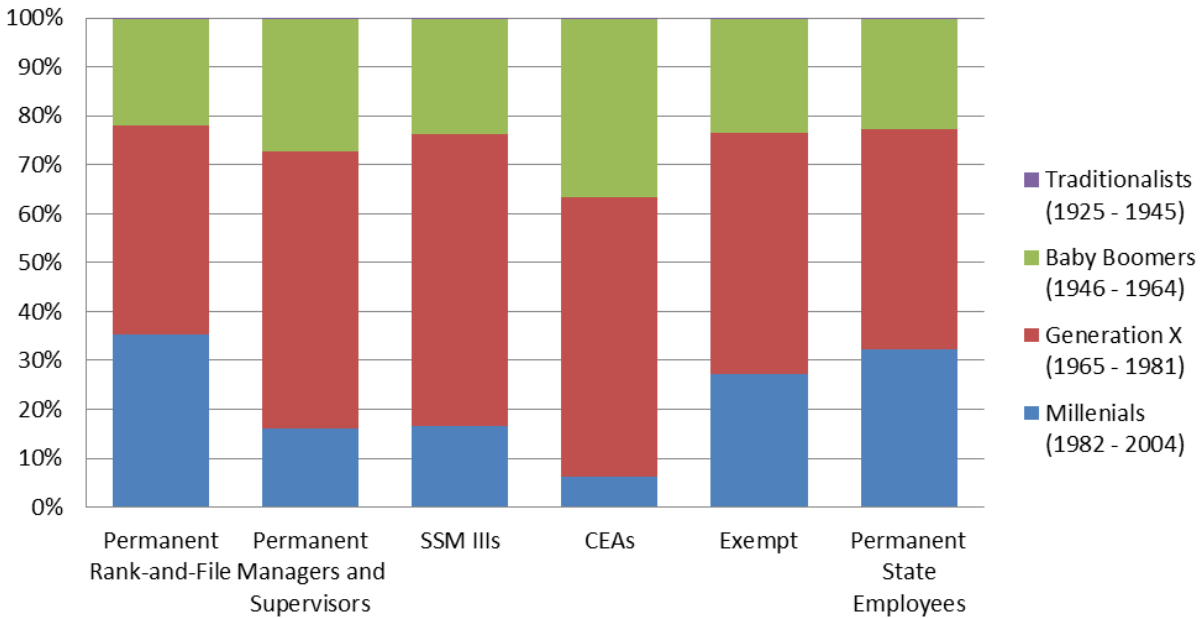


Age Range	Employee Count	Percent
-17	0	0.0%
18-24	0	0.0%
25-29	2	0.1%
30-34	25	1.7%
35-39	86	6.0%
40-44	182	12.7%
45-49	253	17.7%
50-54	354	24.7%
55-59	326	22.8%
60-64	152	10.6%
65+	51	3.6%
Grand Total	1431	100.00%



Age Range	Permanent State Employees	Permanent Rank-and-File	Permanent Managers and Supervisors	SSMIIIs	CEAs
-17	0	0	0	0	0
18-24	3298	3292	6	0	0
25-29	16511	16142	369	1	2
30-34	24766	22795	1971	29	25
35-39	28397	24440	3957	84	86
40-44	28078	22950	5125	102	182
45-49	30987	24442	6544	94	253
50-54	29343	22870	6472	131	354
55-59	25092	19738	5350	86	326
60-64	15587	12713	2873	40	152
65+	7352	6339	1013	12	51
Grand Total	209411	175721	33680	579	1431

Generational Breakout - Statewide



Classification Group	Millennials (1982 - 2004)	Generation X (1965 - 1981)	Baby Boomers (1946 - 1964)	Traditionalists (1925 - 1945)
Permanent Rank-and-File	61926	75158	38117	512
Permanent Managers and Supervisors	5406	19081	9127	66
SSM IIIs	96	345	137	1
CEAs	90	818	519	4
Exempt	975	1761	834	11
Permanent State Employees	67332	94244	47249	578