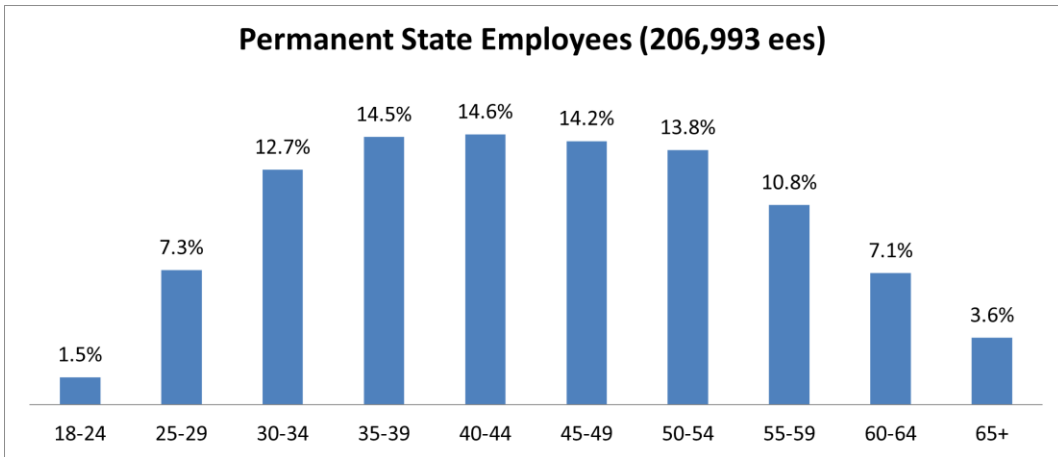
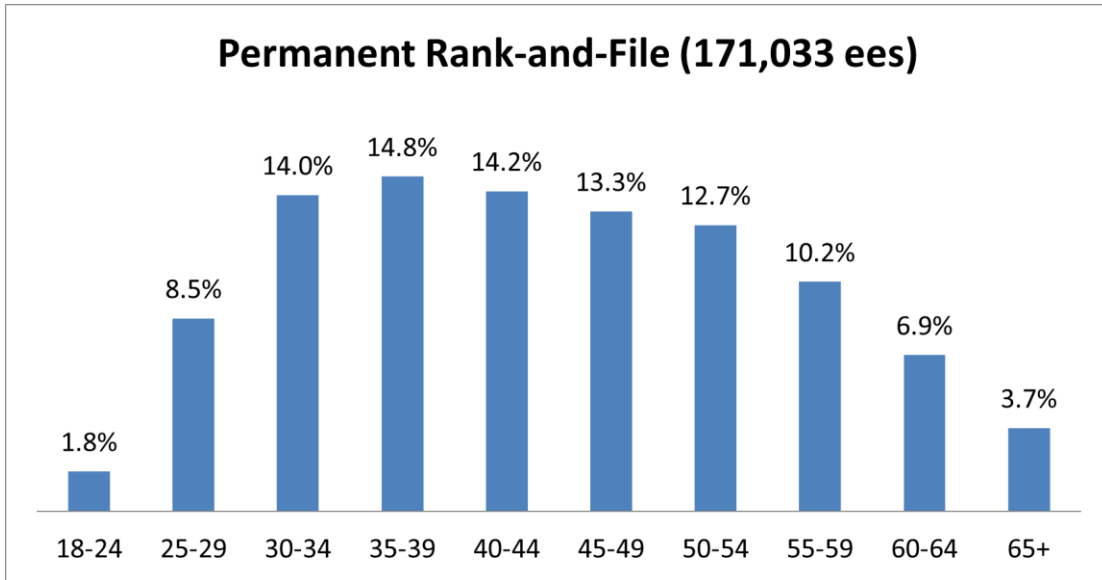


California State Employee Age Demographics December 2022

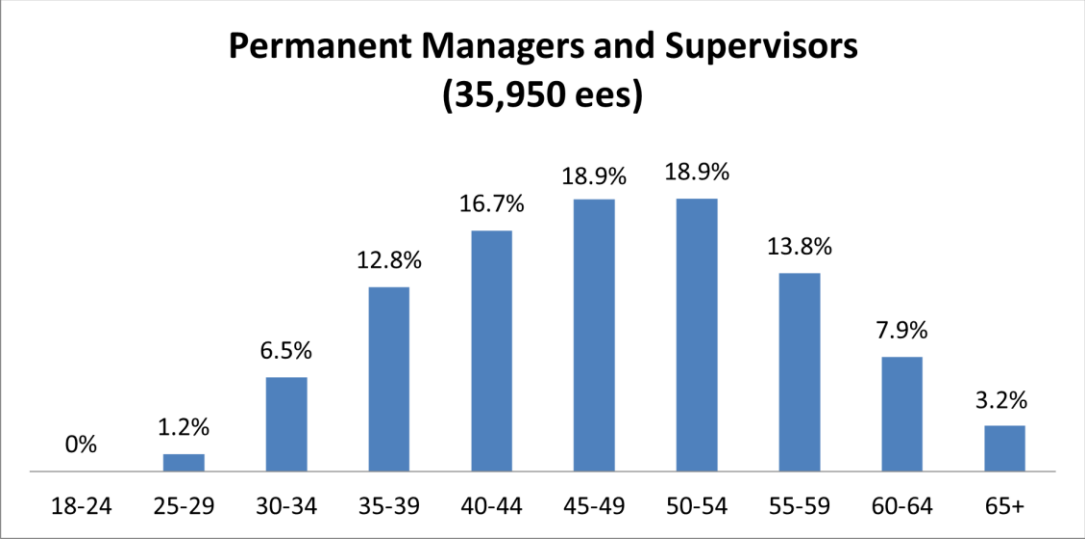
The following age demographics reflect workforce data from December 2022 for civil service employees.



Age Range	Employee Count	Percent
-17	0	0.0%
18-24	3049	1.5%
25-29	15044	7.3%
30-34	26279	12.7%
35-39	29933	14.5%
40-44	30239	14.6%
45-49	29488	14.2%
50-54	28477	13.8%
55-59	22318	10.8%
60-64	14696	7.1%
65+	7470	3.6%
Grand Total	206993	100.00%

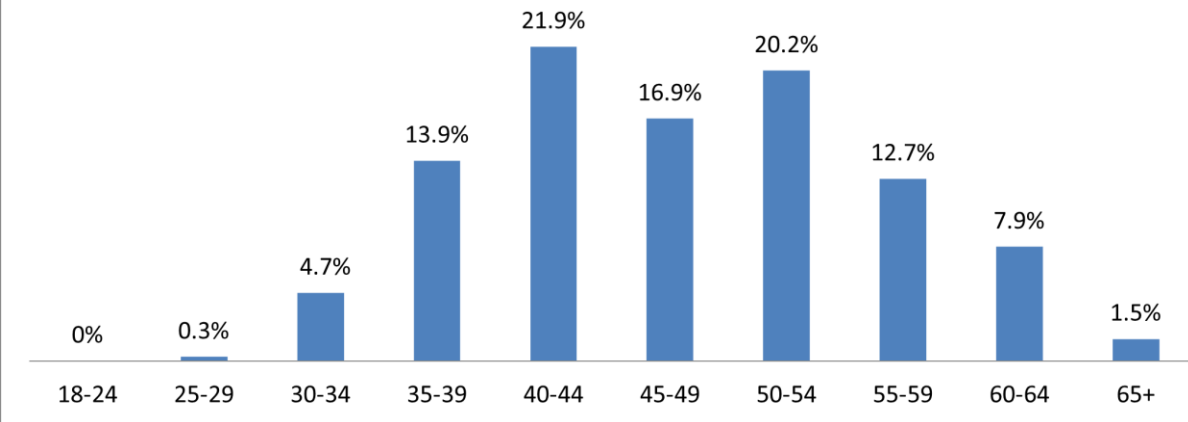


Age Range	Employee Count	Percent
-17	0	0.0%
18-24	3042	1.8%
25-29	14608	8.5%
30-34	23932	14.0%
35-39	25330	14.8%
40-44	24225	14.2%
45-49	22697	13.3%
50-54	21667	12.7%
55-59	17370	10.2%
60-64	11838	6.9%
65+	6324	3.7%
Grand Total	171033	100.00%



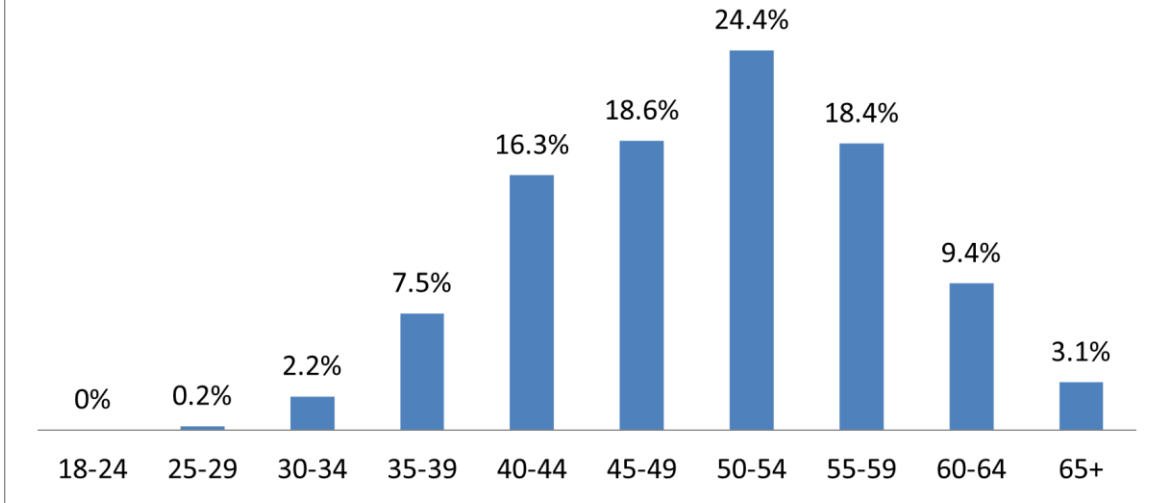
Age Range	Employee Count	Percent
-17	0	0.0%
18-24	7	0.0%
25-29	436	1.2%
30-34	2347	6.5%
35-39	4603	12.8%
40-44	6014	16.7%
45-49	6788	18.9%
50-54	6809	18.9%
55-59	4945	13.8%
60-64	2855	7.9%
65+	1146	3.2%
Grand Total	35950	100.00 %

Staff Services Manager Ills (718 ees)

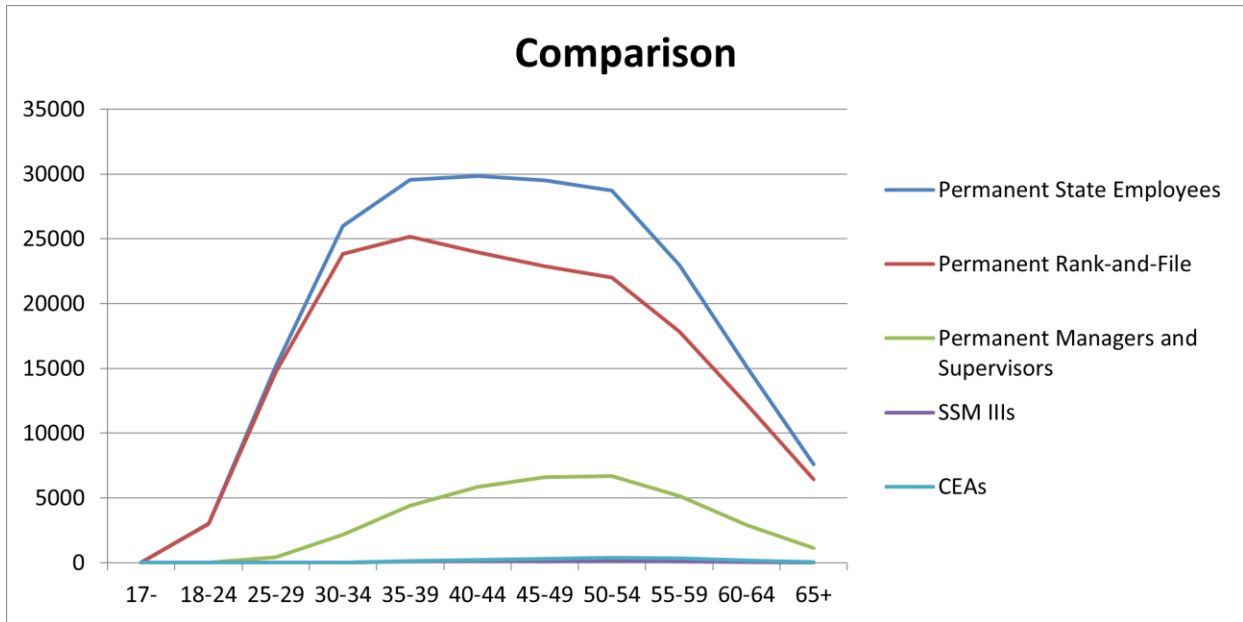


Age Range	Employee Count	Percent
-17	0	0.0%
18-24	0	0.0%
25-29	2	0.3%
30-34	34	4.7%
35-39	100	13.9%
40-44	157	21.9%
45-49	121	16.9%
50-54	145	20.2%
55-59	91	12.7%
60-64	57	7.9%
65+	11	1.5%
Grand Total	718	100.00%

Career Executive Assignment (1670 ees)



Age Range	Employee Count	Percent
-17	0	0.0%
18-24	0	0.0%
25-29	4	0.2%
30-34	36	2.2%
35-39	125	7.5%
40-44	273	16.3%
45-49	310	18.6%
50-54	407	24.4%
55-59	307	18.4%
60-64	157	9.4%
65+	51	3.1%
Grand Total	1670	100.00%



Age Range	Permanent State Employees	Permanent Rank-and-File	Permanent Managers and Supervisors	SSM IIIs	CEAs
-17	0	0	0	0	0
18-24	3021	3017	4	0	0
25-29	15163	14715	448	1	4
30-34	26005	23841	2164	36	32
35-39	29567	25156	4411	86	127
40-44	29835	23971	5864	154	243
45-49	29493	22901	6592	103	307
50-54	28731	22023	6708	142	386
55-59	22980	17838	5142	100	328
60-64	15132	12233	2899	46	167
65+	7594	6452	1142	9	57
Grand Total	207521	172147	35374	677	1651