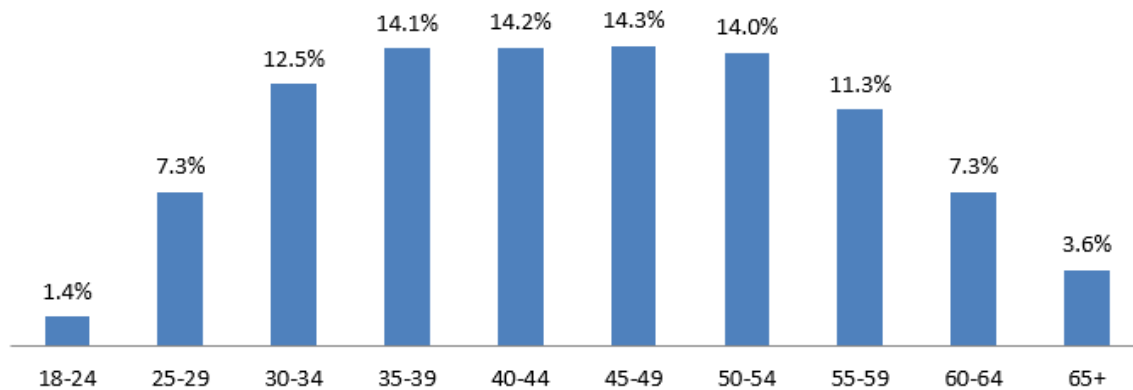


California State Employee Age Demographics December 2021

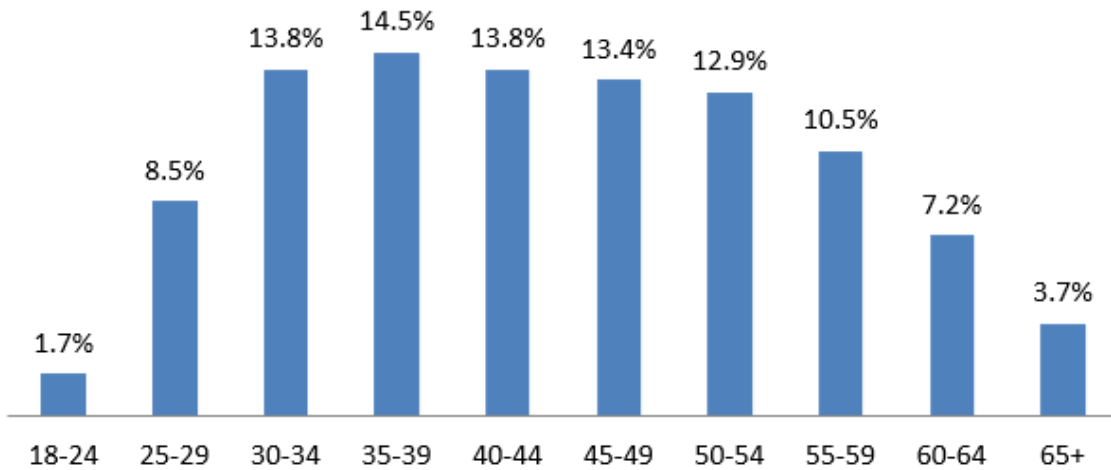
The following age demographics reflect workforce data from December 2021 for civil service employees.

Permanent State Employees (205,941 ees)



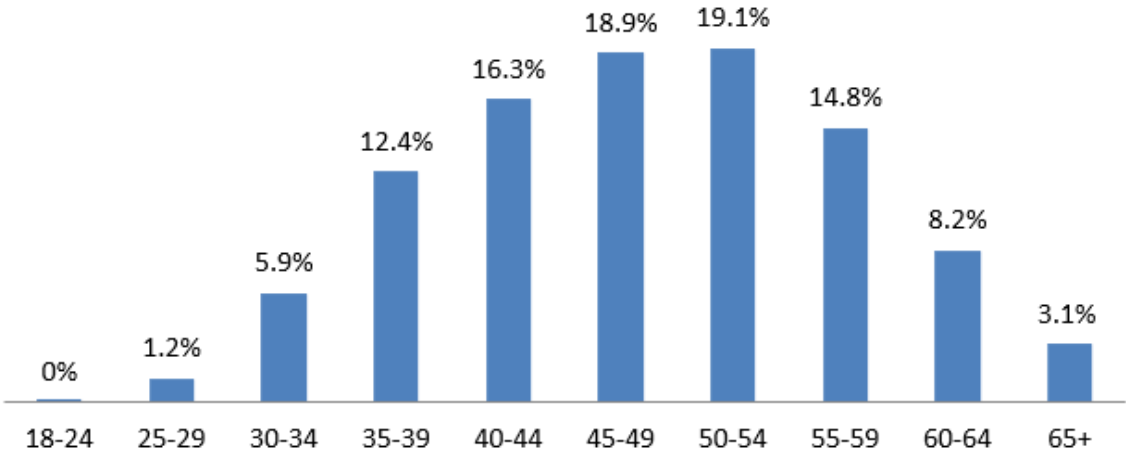
| Age Range | Employee Count | Percent |
|--------------------|----------------|----------------|
| -17 | 0 | 0.0% |
| 18-24 | 2863 | 1.4% |
| 25-29 | 15063 | 7.3% |
| 30-34 | 25679 | 12.5% |
| 35-39 | 29138 | 14.1% |
| 40-44 | 29293 | 14.2% |
| 45-49 | 29456 | 14.3% |
| 50-54 | 28731 | 14.0% |
| 55-59 | 23175 | 11.3% |
| 60-64 | 15135 | 7.3% |
| 65+ | 7408 | 3.6% |
| Grand Total | 205941 | 100.00% |

Permanent Rank-and-File (171,393 ees)



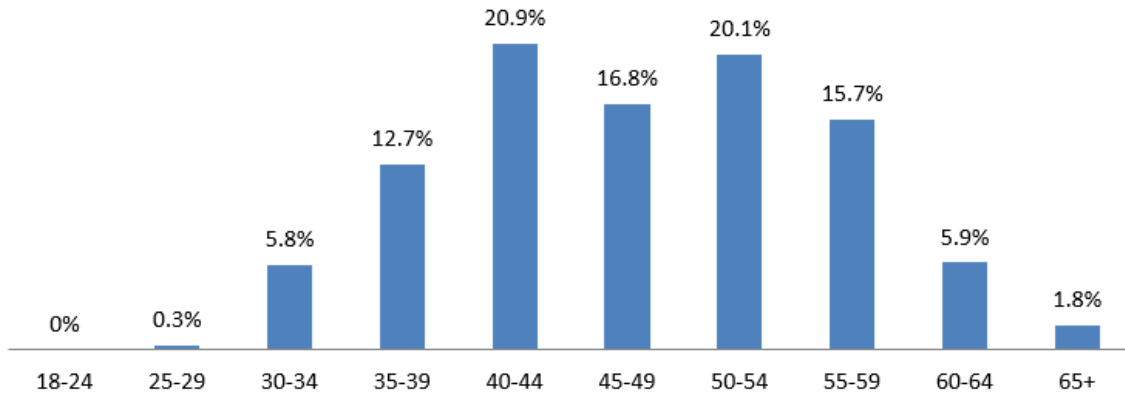
| Age Range | Employee Count | Percent |
|--------------------|----------------|----------------|
| -17 | 0 | 0.0% |
| 18-24 | 2860 | 1.7% |
| 25-29 | 14639 | 8.5% |
| 30-34 | 23646 | 13.8% |
| 35-39 | 24839 | 14.5% |
| 40-44 | 23647 | 13.8% |
| 45-49 | 22939 | 13.4% |
| 50-54 | 22131 | 12.9% |
| 55-59 | 18060 | 10.5% |
| 60-64 | 12303 | 7.2% |
| 65+ | 6329 | 3.7% |
| Grand Total | 171393 | 100.00% |

**Permanent Managers and Supervisors
(34,538 ees)**



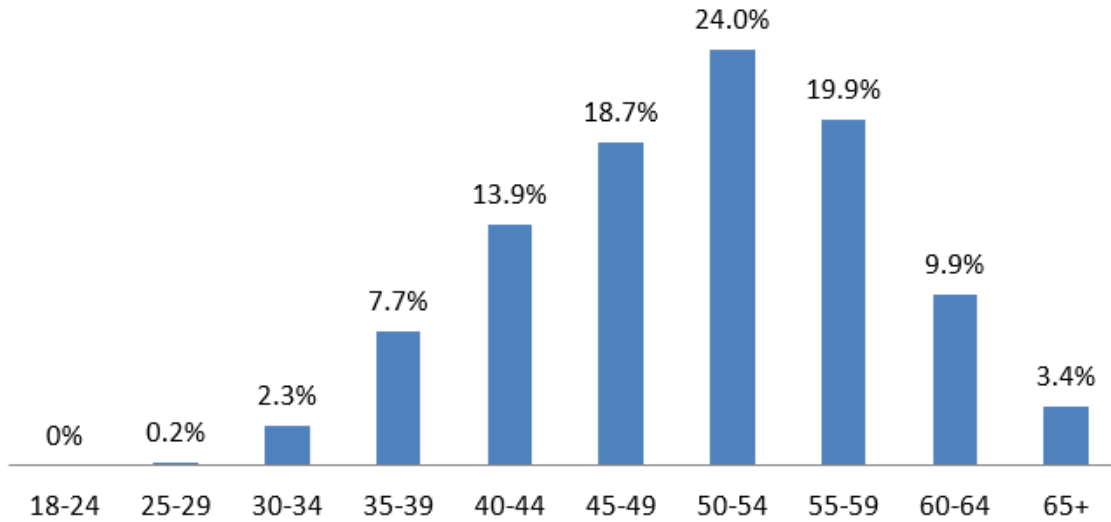
| Age Range | Employee Count | Percent |
|--------------------|----------------|-----------------|
| -17 | 0 | 0.0% |
| 18-24 | 3 | 0.0% |
| 25-29 | 424 | 1.2% |
| 30-34 | 2033 | 5.9% |
| 35-39 | 4299 | 12.4% |
| 40-44 | 5646 | 16.3% |
| 45-49 | 6515 | 18.9% |
| 50-54 | 6599 | 19.1% |
| 55-59 | 5112 | 14.8% |
| 60-64 | 2828 | 8.2% |
| 65+ | 1079 | 3.1% |
| Grand Total | 34538 | 100.00 % |

Staff Services Manager IIIs (655 ees)



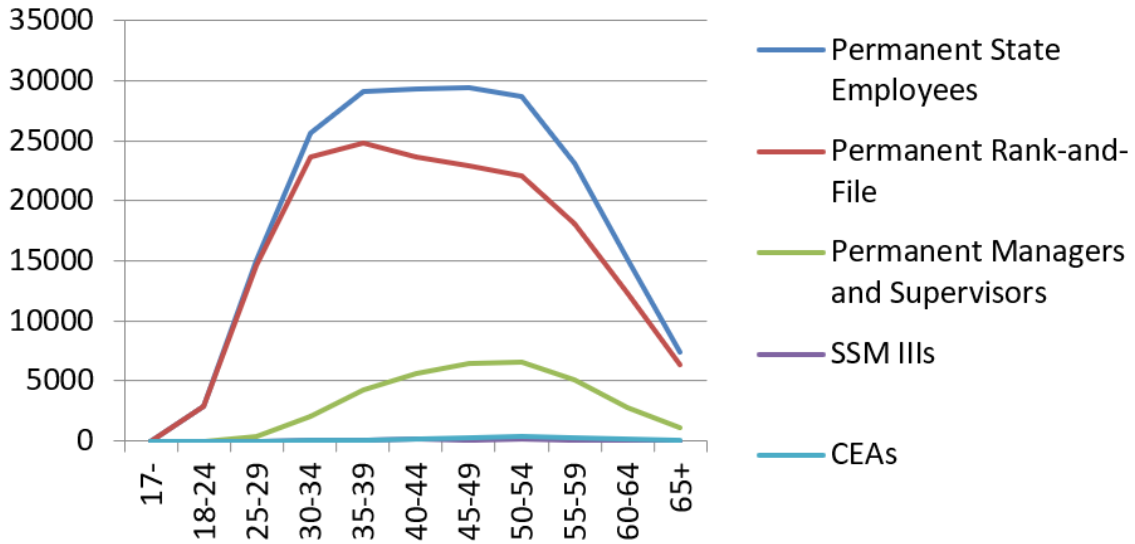
| Age Range | Employee Count | Percent |
|--------------------|----------------|----------------|
| -17 | 0 | 0.0% |
| 18-24 | 0 | 0.0% |
| 25-29 | 2 | 0.3% |
| 30-34 | 38 | 5.8% |
| 35-39 | 83 | 12.7% |
| 40-44 | 137 | 20.9% |
| 45-49 | 110 | 16.8% |
| 50-54 | 132 | 20.2% |
| 55-59 | 103 | 15.7% |
| 60-64 | 39 | 6.0% |
| 65+ | 11 | 1.7% |
| Grand Total | 655 | 100.00% |

Career Executive Assignment (1,576 ees)



| Age Range | Employee Count | Percent |
|--------------------|----------------|----------------|
| -17 | 0 | 0.0% |
| 18-24 | 0 | 0.0% |
| 25-29 | 3 | 0.2% |
| 30-34 | 36 | 2.3% |
| 35-39 | 122 | 7.7% |
| 40-44 | 219 | 13.9% |
| 45-49 | 294 | 18.7% |
| 50-54 | 378 | 24.5% |
| 55-59 | 314 | 19.9% |
| 60-64 | 156 | 9.9% |
| 65+ | 54 | 3.4% |
| Grand Total | 1576 | 100.00% |

Comparison



| Age Range | Permanent State Employees | Permanent Rank-and-File | Permanent Managers and Supervisors | SSM IIIs | CEAs |
|--------------------|---------------------------|-------------------------|------------------------------------|------------|-------------|
| -17 | 0 | 0 | 0 | 0 | 0 |
| 18-24 | 2863 | 2860 | 3 | 0 | 0 |
| 25-29 | 15063 | 14639 | 424 | 2 | 3 |
| 30-34 | 25679 | 23646 | 2033 | 38 | 36 |
| 35-39 | 29138 | 24839 | 4299 | 83 | 122 |
| 40-44 | 29293 | 23647 | 5646 | 137 | 219 |
| 45-49 | 29456 | 22939 | 6515 | 110 | 294 |
| 50-54 | 28731 | 22131 | 6599 | 132 | 378 |
| 55-59 | 23175 | 18060 | 5112 | 103 | 314 |
| 60-64 | 15135 | 12303 | 2828 | 39 | 156 |
| 65+ | 7408 | 6329 | 1079 | 12 | 54 |
| Grand Total | 205941 | 171393 | 34538 | 656 | 1576 |